

# EAUZONE



**matki**

## MATKI

For 50 years Matki has led the way in luxury Showering Design. Our Shower Screens, Shower Trays and Brassware are characterised by their elegant style, reliable performance and outstanding longevity.

All Matki products are designed and made in the United Kingdom. Shower Screens are handmade near Bristol, Shower Trays in Cornwall, and Brassware in Hampshire.

Safety and Quality are central to our ethos and all products and components are tested way beyond industry standards. We have an experienced and attentive Customer Service Team and meaningful guarantees.

Our products can be purchased in the UK, Ireland and France through an extensive Matki Dealer Network, a list of which is available on the Matki website. We strongly recommend viewing displays prior to purchase.

## EAUZONE

Elegant, beautifully proportioned designs; Reassuringly structural 10mm thick glass; Real solid brass hardware; EauZone is the perfect choice for luxury showering.

Designed by the Matki in-house Design Team, EauZone represents the pinnacle of innovation and performance in showering. Patents and Design Rights are held for key design features such as the superbly strong anti-slip hinges and expertly curved Radius-20 glass.

Every component is handmade to order in the Matki factory near Bristol by our expert production teams and each EauZone product is carefully checked prior to delivery.

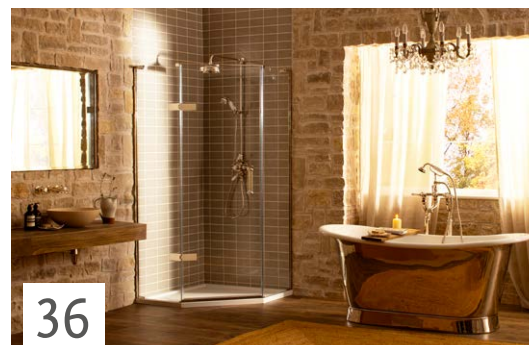
Find the perfect fit for your bathroom with Sliding and Hinged Doors, Wet Room Panels and Bath Screens offered in thousands of sizes and setups. Beyond that EauZone can be tailor-made to your exact requirements with EauZone Bespoke.

The choices are truly endless.



2

WET ROOM PANELS



36

QUINTESSE ENCLOSURES



44

BESPOKE



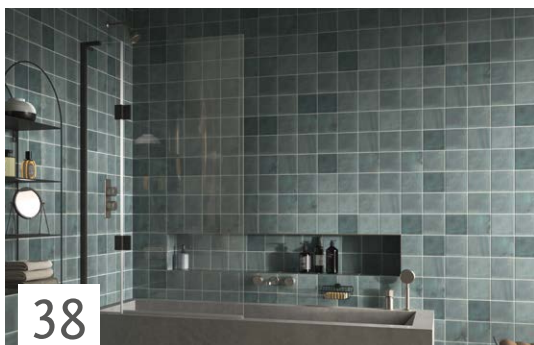
16

SLIDING ENCLOSURES



22

HINGED ENCLOSURES



38

BATH SCREENS



40

HARDWARE & SPECIAL FINISHES



82

SHOWER TRAYS



WET ROOM PANELS

A new level of elegance for wet rooms. EauZone Wet Room Panels use a higher grade of material and hand-polished finishes to achieve spell-binding designs with eye-catching detail.

MESH GLASS

With it's hand-woven appearance and shimmering effects, the EauZone Framed Wet Room Panel with Mesh glass creates a highly decorative partition. Available with silver or gold metallic mesh glass with exterior framing in a choice of 11 special finishes.

For pricing and specification see page 67.

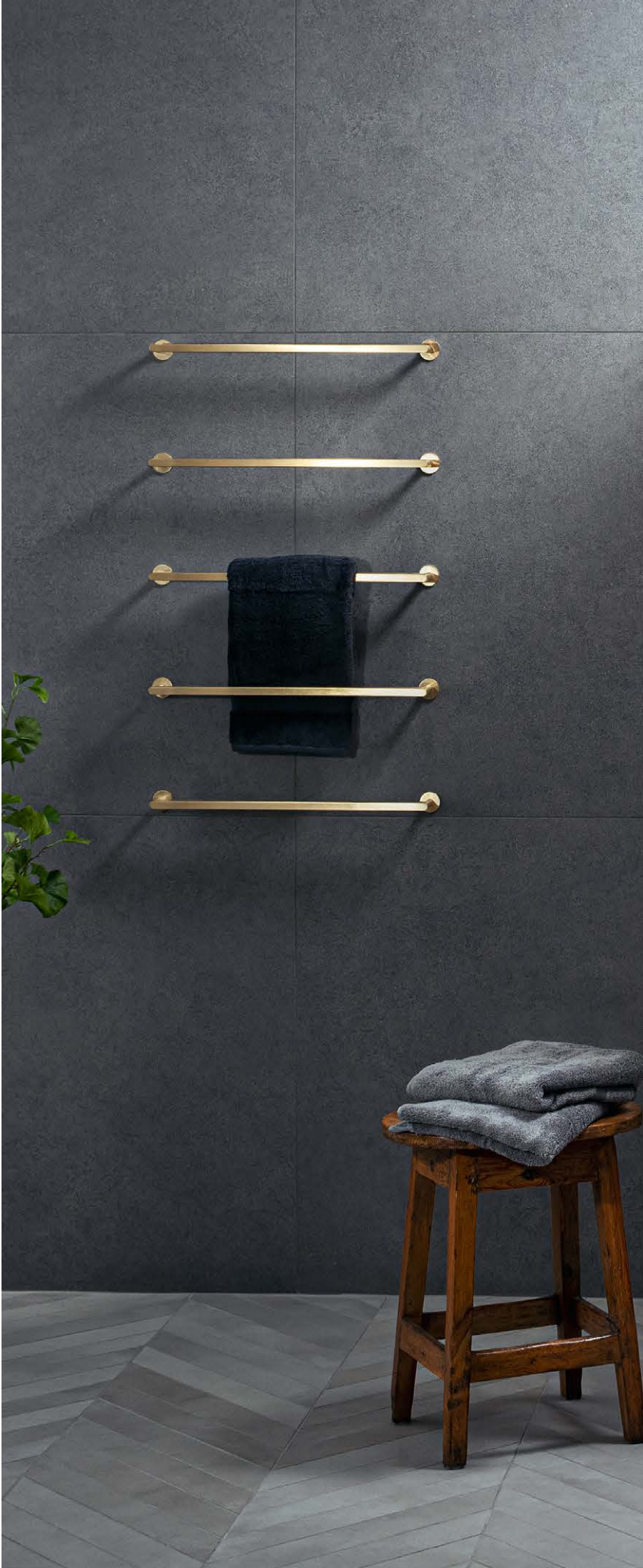


EWMP - SILVER MESH GLASS WITH POLISHED CHROME FRAMING



EWFP - CLEAR GLASS WITH EXTERIOR FRAMING

EWMP - GOLD MESH GLASS WITH BRUSHED BRASS FRAMING













## SPLENDIDLY SECURE

The new EauZone Wet Room Panels secure reassuring 10mm thick Safety Glass to the wall with either aluminium or brass wall frames and a beautifully proportioned solid brass bracket.

For the special Swadling Brassware finishes, only brass material is used for frames and fittings. This ensures the finishes match perfectly between parts and always look their best. For more information see page 42.

## ACCESSORISE

To add individual style to your wet room panel, Towel Rails can provide practicality and decoration, and the new Accent Frames create an alluring sense of definition and unique character.

See more on page 41 and for pricing and specification see page 65.



EWP – EAUZONE WET ROOM PANEL WITH LINEAR TOWEL RAIL; BRUSHED BRASS

EWP – EAUZONE WET ROOM PANEL; BRUSHED BRASS



EAUZONE RADIUS-20 WET  
ROOM PANEL

Unparalleled, distinctive and completely unique, the Radius-20 is engineered from a single sheet of 10mm glass, expertly curved to achieve a softened, fluid edge with a tight 20mm inner radius.

See page 68 for Sizes, Prices and Specification.



EWL - GLASS DETAIL



EHL - EAUZONE RADIUS-20 WITH HINGE PANEL FOR CORNER; POLISHED GOLD

The Radius-20 panel can be used as a side panel in hinged door models EHL and EWCL, see pages 62 and 63.

EWL - EAUZONE RADIUS-20 WET ROOM PANEL; POLISHED NICKEL













## EAUZONE ARCH WET ROOM PANEL WITH SHOWER BRACE

At 2.2 metres high, the eye-catching and quietly sophisticated EauZone Arch Wet Room Panel is a treat to the senses. The arched glass is beautifully clear and outlined by elegantly proportioned frames and made of pure brass, available in 11 special finishes.

A shower brace keeps the headroom of the shower area free and more defined by taking on two roles at the same time; it makes the panel strong and secure whilst supplying water for a satisfying and thoroughly luxurious shower.

See page 69 for Prices and Specification.



FRAMING DETAIL



SEE PAGE 81 FOR SHOWER BRACES

## EAUZONE DOME WET ROOM PANEL

At once strikingly architectural and yet soft and subtle. The domed shape and beautiful brass outline add individuality and luxury to your bathroom.

The NEW Dome wet room panels come as a Twin Entrance models (see right) or Wall-Mounted models (see overleaf). Choose from the panels pictured with their brass outlines or frameless versions which retain the elegant, curved shape but lose the exterior framing.

For more details and pricing, please see pages 73.



EFDT – EAUZONE DOME FRAMED TWIN ENTRANCE WET ROOM PANEL; AGED BRASS









## CRYSTAL CLEAR

Our Dome panels come with a choice of ultra clear or ultra clear fluted glass. The fluted glass does obscure the view through the panel, but is specially designed to have wider distances between crests to give a more settled and elegant appearance. Additional glass finishes are available for bespoke versions of the Dome panel, please see page 71.



EFDP - EAUZONE DOME FRAMED WET ROOM PANEL; FLUTED GLASS, LIVING BRASS

SPLASH PROTECTION

A luxurious but highly practical wet room screen, perfect for added flexibility and protection against splash and spray at every angle. The EauZone Wet Room Panel With Hinge Panel features an innovative discreet **watertight sealing system** which minimises the seal size whilst achieving excellent water retention at the panel join.

See specification and pricing on page 74.



EWPH - HINGE PANEL, STORED POSITION

EWPH – EAUZONE WET ROOM PANEL WITH HINGE PANEL; BRUSHED NICKEL















## SLIDING DOORS

The look and feel of luxury, EauZone Sliding Doors pair a balanced and highly finished appearance with the smoothest, whisper quiet sliding motion.

**Stainless Steel** wall frames and top track are mirror-polished to achieve an impressively reflective surface. Their high tensile strength is ideally suited to carrying the **10mm safety glass** smoothly on the specially shaped track inners.

Easy to clean with **Matki Easy Clean Protection** applied as standard and a **quick door release mechanism** to clean the door-panel overlap, EauZone Sliders have been **CE-Tested to 150,000 open and close cycles**, equivalent to over 100 years of use.

Please see pages 48 – 52 for Sliding Door pricing and specifications.

OPTIONS

EauZone Sliders are available in two Frame Finishes: Chrome/Mirror-Polished Stainless Steel (Standard) and Brushed Steel.

Special Glass Finishes are available for most sizes.

INSTALLATION

EauZone Sliders can be installed on a Shower Tray or Shower Floor, or directly onto a tiled Wet Room floor.



EPST - EAUZONE SLIDER THREE-SIDED

EPSR - EAUZONE SLIDER FOR RECESS













## CURVED CORNER

### A DESIGN FIRST

Uniquely, every panel including the door of the EauZone Curved Corner is engineered from 10mm glass, an impressive testament to the unit's strength and durability and a complete first in Curved Shower Enclosure design.

Taking inspiration from the successful EauZone Slider, the Curved Corner is built from the same high performing materials with a Stainless Steel top track and intricately shaped inner tracks, allowing for a superbly smooth opening movement.

See page 52 for Sizes, Prices and Specification.



ECS900 – EAUZONE CURVED CORNER



HINGED DOORS

Elegantly designed to accentuate clarity and simplicity, the vertical and horizontal lines of EauZone Hinged Doors are kept free from any visual disruption. Subtle, sleekly styled L-brackets hold the glass firmly in place from the top and blend into the balanced proportions of the design.

Specially crafted **EauZone Anti-Slip Hinges (Patent Number 2470778)** hold the heavy weight of **10mm Safety Glass** securely in place.

EauZone Hinged Doors come with **Matki Easy Clean Protection** as standard and are **CE-Tested to 100,000 cycles of open and close**, 5 times the industry requirement.

Please see pages 53 – 63 for Hinged Door pricing and specifications.



L-BRACKET DETAIL IN CHROME

EPIC – EAUZONE HINGED DOOR WITH HINGE PANEL AND INLINE PANEL FOR CORNER; POLISHED CHROME, WITH FRAME ACCENTS













## CHOICE

The EauZone Hinged Collection has a vast selection of over 1,000 standard sizes and panel combinations, making luxurious showering a possibility for any shape or size of bathroom. For specialist projects, EauZone Bespoke offers made-to-measure size and shape glass.

For more information, visit [www.matki.co.uk/bespoke](http://www.matki.co.uk/bespoke)

## FRAME ACCENTS

Add decoration and definition to your EauZone Shower with beautifully finished Frame Accents. Pictured here in Aged Brass, these pure brass trims come in a choice of Swadling Brassware finishes.



EPI – EAUZONE HINGED DOOR WITH HINGE PANEL AND INLINE PANEL FOR RECESS;  
AGED BRASS, WITH FRAME ACCENTS

## EAUZONE SPECIAL FINISHES

Only the best will do - when you choose EauZone in a special finish, it really is special. To ensure the finish looks its absolute best, Matki manufacture special finish EauZone products exclusively from brass, which is then plated, polished, brushed or aged by our team at Swadling Brassware. This results in frames and fittings which match perfectly together and harmonize much more closely with other special finish fittings in your bathroom.

## MATKI MOMENTS

On our website in the Discover section, you can read about Sarah and her family's renovation project, Patch and Pol's beautiful home in Cheltenham, Louise's bathroom update and many more inspiring projects using Matki EauZone, visit [www.matki.co.uk/discover](http://www.matki.co.uk/discover) to find out more.

See page 42 for more details on Special Finishes.



EPW - EAUZONE BESPOKE HINGED DOOR FOR RECESS; MATT BLACK









## GLASS AND SPECIAL GLASS FINISHES

EauZone uses only 10mm thick safety glass. This gives the doors and panels a substantial appearance and confidence-inspiring feel. The glass is all in conformance with EN-12150-1 and is regularly tested to ensure safety and compliance.

All EauZone Hinged Doors are available in Special Glass Finishes. Choose from Standard Clear, Black Tinted, Bronze Tinted, Ultra Clear Low Iron, Satin/Frosted and the exciting Ultra Black. Ultra Black and Satin/Frosted finishes are ideal for privacy purposes.

See page 46 for more details on Special Glass Finishes.

## THE EAUZONE HINGE

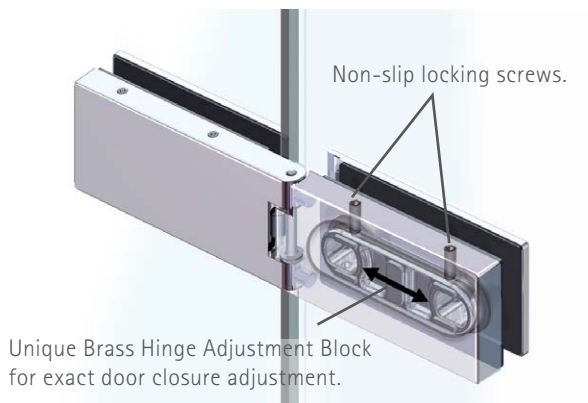
The **EauZone Anti-Slip Hinge (Patent Number 2470778)** was designed by Matki for EauZone Hinged Doors specifically for 10mm thick glass.

The hinge has three main features:

Strength – To securely hold heavy glass doors in place for year after year without dropping, the hinge secures onto an Adjustment Block which is bonded to the glass. Two locking screws, once tightened, eliminate any possibility of the door dropping over time.

Water-Tight Design – The hinge allows the vertical door seal to travel continuously through it, with no cuts or holes. This ensures it is completely water-tight even during cleaning.

Calibrated Spring-Loading – Set to close at just beyond 180 degrees, the hinge permanently pushes at the closure seal and creates a water-tight barrier without the use of friction. This means the door is easy to open and close and if knocked inadvertently during showering will return to closed position.



EPWC – EAUZONE HINGED DOOR WITH INLINE PANEL FOR CORNER















## LIVING FINISHES

If you're looking for something a little different, the EauZone Living Finishes may be just the thing. Full of authentic character and charm, their appearance will develop and age over time in unpredictable ways eventually forming a unique patina.

Living Brass, Brushed Brass, Aged Brass, Dark Bronze and Living Copper are all uncoated and will change as they come into contact with the environment around them. Please see the Maintenance section on the Matki website for more information.

A STRONG FOUNDATION

Designed by Matki and made at our Shower Tray Facility in Cornwall, Matki Shower Trays and Floors are the ideal foundation for EauZone. A wide range of shapes, sizes, profiles and colours can be found in the Shower Tray pages 82 – 91.

INSTALLATION

EauZone Hinged Doors can be installed on a Shower Tray, Shower Floor or directly onto a tiled Wet Room Floor.



EPC – EAUZONE HINGED DOOR FOR CORNER

EPR – EAUZONE HINGED DOOR FOR RECESS; POLISHED NICKEL















## THE NEW QUINTESSE

Refined not reinvented, the upgraded EauZone Quintesse has an even better look and feel.

Specially crafted brass components and bevelled glass edges create the form and function of a shower door designed to impress and built to last.

The Quintesse shape gives a spacious interior and allows for greater flexibility in bathroom layout. Install onto a matching Quintesse Shower Tray or Floor from our Continental, Universal (page 91) or Preference (page 89) ranges.

See page 64 for Sizes, Prices and Specification.



QUINTESSE HINGE POLISHED NICKEL

EPQ – EAUZONE QUINTESSE; POLISHED NICKEL; LOW-IRON GLASS









ABOVE: EPD - EAUZONE DOUBLE PANEL BATH SCREEN; MATT BLACK

LEFT: EPB - EAUZONE TWO PANEL BATH SCREEN; LIVING COPPER

## EAUZONE BATH SCREENS

EauZone Bath Screens offer a luxurious **water-tight** solution for over-bath showering with single, two panel and folding options presented for flat top baths.

See page 77 - 79 for Sizes, Prices and Specification.

### DOUBLE PANEL BATH SCREEN

The Double Panel Bath Screen offers an attractive, symmetrical look and has a convenient function with the hinged panel folding away when using the bath for bathing.

See page 79 for Sizes, Prices and Specification.



EPS - EAUZONE SINGLE BATH SCREEN; DARK BRONZE

40. HANDLES

LINEAR (STANDARD)



SINGLE STRAIGHT



For Sliding and Curved Models

TRADITIONAL



CURVED



ENGINEER



ILLUSTRIOUS





WALL TOWEL RAILS



WLTR600BB - Wall Linear Towel Rail in Brushed Brass



WLTR600NP - Wall Linear Towel Rail in Polished Nickel

PANEL/DOOR TOWEL RAILS



LTR600BB - Linear Towel Rail in Brushed Brass



TTRDS600CP - Double-Sided Traditional Towel Rail in Polished Chrome

Panel Towel Rails are available for select EWP and EWFP sizes, see pages 65 and 66.  
On other sizes and models bespoke glass is required, please select applicable Bespoke (BES) model code on the Matki website configurator.  
See page 80 for Accessories Specification and Pricing.



WTK-LB - Wall Hook in Living Brass



SPK-CP - Single Panel Hook in Chrome



DPK-CP - Double Panel Hook in Chrome

42. SPECIAL FINISHES

ILLUSTRIOUS



ENGINEER



INVINCIBLE



ABSOLUTE



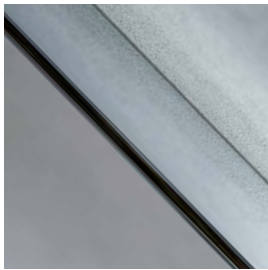
Part of Matki since the early 2000s, Swadling Brassware has four designer basin, bath and shower mixer collections and over 40 years of experience in plating and polishing special finishes.



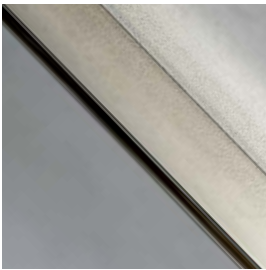
For a perfect match, Swadling Brassware and EauZone parts are plated in the same tanks, then beautifully finished by the same expert team.



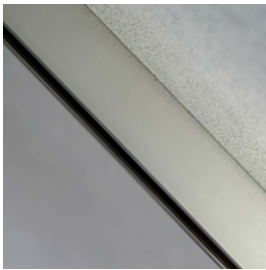
(S) POLISHED CHROME



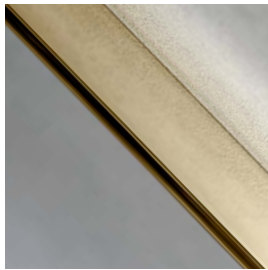
(S) POLISHED NICKEL



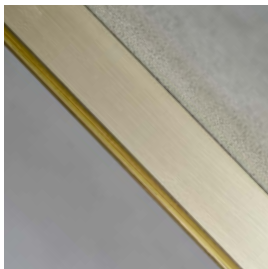
(S) BRUSHED NICKEL



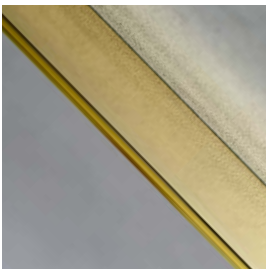
(S) POLISHED GOLD



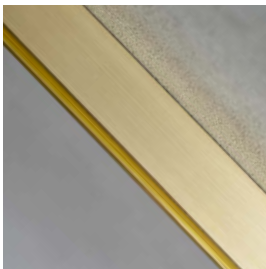
(S) BRUSHED GOLD



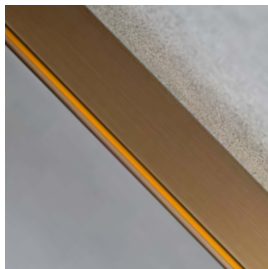
(S) LIVING BRASS\*



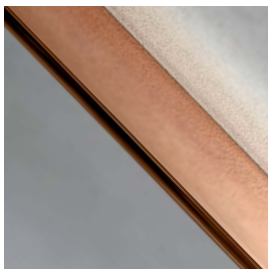
(S) BRUSHED BRASS\*



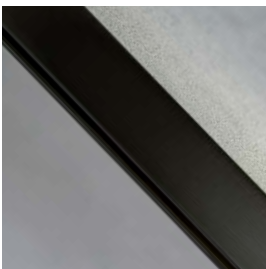
(S) AGED BRASS\*



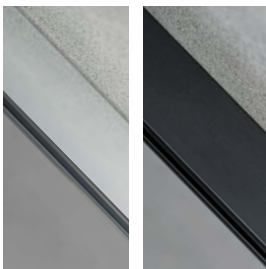
(S) LIVING COPPER\*



(S) DARK BRONZE\*



ALUMINIUM FINISHES



SILVER  
(STANDARD)

MATT BLACK

Finishes marked with an (S) will match perfectly across the product as they are applied purely to frames and fittings made exclusively from brass.

\*Living Finishes can however vary across and between parts and unless regularly maintained will oxidise over time in unpredictable ways.  
For more details please see Care & Maintenance section of Matki website.

(S) Swadling Brassware finishes are available to order for EauZone Wet Room Panel Models EWP, EWFP, EWMP, EWL, EWAP, EWPH, and for all EauZone Hinged Door models.

Finishes not marked with an (S) use a combination of brass and aluminium material so will differ in colouration and texture between parts, please view samples.

EAUZONE SLIDING AND CURVED ENCLOSURES

Models: EPSR, EPSC, EPSC-REV, EPST, ECS

CHROME / POLISHED STEEL



BRUSHED STEEL











## EAUZONE BESPOKE

Make a statement with special sizes, shapes and colours or find solutions to the unique character of your property's bathroom. EauZone Bespoke takes all the elegance and superb performance of the standard collection and makes it special to you.

Heights and widths of the product can be enlarged to achieve a grander look or made smaller to fit neatly in a tight space. Our accurate measuring system allows glass to be shaped closely around features like baths, exposed beams or sloping ceilings.

A variety of frame types and glass finishes lets you choose your preferred style. Our Completely Frameless option is perfect for a minimalist look, whilst tinted or ultra black glass finishes really make the shower area stand out.

## CHOOSING BESPOKE

Bespoke models can be chosen and priced on the Matki website configuration tool. Each of the model pricing and specification pages shows a short link to the relevant webpage where Bespoke Models, with BES suffix, can be selected from the dropdown list.

The Matki Bespoke Department is also happy to help with any enquiries and can be contacted on 01454 322888 or [Bespoke.Department@matki.co.uk](mailto:Bespoke.Department@matki.co.uk)

Discover more about EauZone Bespoke in the following pages and online at [www.matki.co.uk/bespoke](http://www.matki.co.uk/bespoke) or visit your nearest Matki EauZone Dealer.

46. BESPOKE OPTIONS: GLASS FINISHES

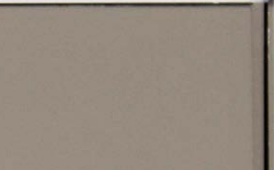
STANDARD CLEAR GLASS



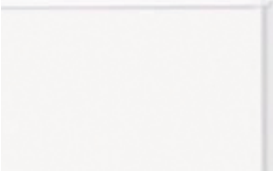
FROSTED/SATIN GLASS



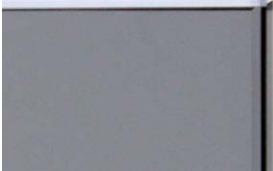
BRONZE TINTED GLASS



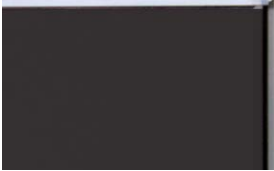
ULTRA CLEAR LOW IRON GLASS



BLACK TINTED GLASS



ULTRA BLACK GLASS



Standard Clear Glass is supplied as standard with all EauZone products unless otherwise stated.  
Surcharges apply for all special glass finishes. Please visit the relevant model page on the Matki website to price special glass using Bespoke (BES) product codes.

STANDARD AND BESPOKE (BES) FRAMING

For Hinged Door, Wet Room Panel and Bath Screen Models

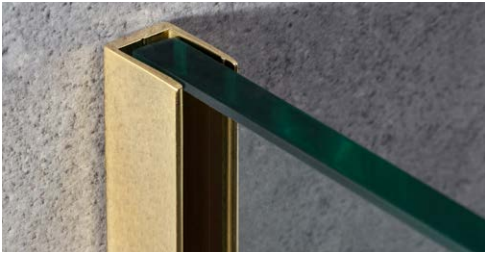
STANDARD FRAME



28mm Profile  
All finishes  
Standard & Bespoke (BES)  
Max. height 2.4m

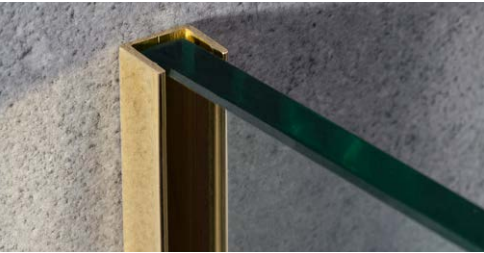
ULTRA BESPOKE (ULTR) FRAMING

MEDIUM FRAME



17mm Profile  
S finishes only  
For Bespoke (BES) Models only  
Max. height 2.4m

MINIMAL FRAME



11mm Profile  
All finishes  
For Bespoke (BES) Models only  
Max. height 3m

COMPLETELY FRAMELESS



No frame  
All finishes  
For Bespoke (BES) Models only





Ensuring your EauZone is fitted perfectly, Matki Installations is a friendly and efficient in-house team operating throughout the United Kingdom and abroad. The following services are offered:

HIGH STANDARD INSTALLATION

This expert installation-only service can be ordered for all EauZone and EauZone Bespoke (BES) Shower Door, Wet Panel and Bath Screen products.

MEASURE & INSTALLATION

A prerequisite when using minimal frames or going completely frameless due to the highly accurate measurements and more complex fitting required, Measure and Installation is also optional for other EauZone models where you would just like the extra peace of mind.

The Matki Installations team will always clear away and recycle all packaging and leave your new showering area sparkling.

Please make sure you read the Matki Installations [Important Information](#) on the Matki website prior to ordering the service and that tiling is complete prior to the team's visit.

EXTENDED GUARANTEE

All Matki products installed by Matki Installations benefit from an extended 15 year guarantee with the initial 3 year period also having labour cost cover. Please register your guarantee on the Matki website with the details provided.

For Matki Installations services outside the UK mainland, please contact Matki for pricing.

MATKI INSTALLATIONS PRICING

MEASURE & INSTALL	£ EX. VAT	£ INC. VAT
Measure	£266.00	£319.00
Enclosure Installation, EWAP	£799.00	£958.80
Wet Panel, Bath Screen	£587.00	£704.00

Measure is optional for models with standard or medium frames but required for all minimal framed and completely frameless models. Product and Installation prices may change after measure. Please contact Matki for installation pricing at heights above 2200mm. For areas outside the UK mainland, please contact Matki for pricing.

48. EPSR: SLIDING DOOR WITH FIXED PANELS FOR RECESS

HOW TO ORDER

- Select RECESS DOOR model from table below
- Make choices from OPTIONS table, adding suffix codes to model code and surcharges to model price; standard options will be supplied unless otherwise specified

DIMENSIONS (MM)				PRICES		
RECESS DOOR	A	B	C	D	£ EX. VAT	£ INC. VAT
EPSR1100	1062-1092	430	55-70	477-497	£1,862.00	£2,234.40
EPSR1125	1087-1117	430	80-95	477-497	£1,862.00	£2,234.40
EPSR1150	1112-1142	430	105-120	477-497	£1,862.00	£2,234.40
EPSR1175	1137-1167	430	130-145	477-497	£1,862.00	£2,234.40
EPSR1200	1162-1192	465	55-70	523-543	£1,862.00	£2,234.40
EPSR1225	1187-1217	465	80-95	523-543	£2,123.00	£2,547.60
EPSR1250	1212-1242	465	105-120	523-543	£2,123.00	£2,547.60
EPSR1275	1237-1267	465	130-145	523-543	£2,123.00	£2,547.60
EPSR1300	1262-1292	465	155-170	523-543	£2,123.00	£2,547.60
EPSR1325	1287-1317	465	180-195	523-543	£2,131.00	£2,557.20
EPSR1350	1312-1342	465	205-220	523-543	£2,131.00	£2,557.20
EPSR1375	1337-1367	465	230-245	523-543	£2,131.00	£2,557.20
EPSR1400	1362-1392	465	255-270	523-543	£2,131.00	£2,557.20
EPSR1425	1387-1417	465	280-295	523-543	£2,149.00	£2,578.80
EPSR1450	1412-1442	465	305-320	523-543	£2,149.00	£2,578.80
EPSR1475	1437-1467	465	330-345	523-543	£2,149.00	£2,578.80
EPSR1500	1462-1492	610	55-70	678-693	£2,149.00	£2,578.80
EPSR1525	1487-1517	610	80-95	678-693	£2,224.00	£2,668.80
EPSR1550	1512-1542	610	105-120	678-693	£2,224.00	£2,668.80
EPSR1575	1537-1567	610	130-145	678-693	£2,224.00	£2,668.80
EPSR1600	1562-1592	610	155-170	678-693	£2,224.00	£2,668.80
EPSR1625	1587-1617	610	180-195	678-693	£2,330.00	£2,796.00
EPSR1650	1612-1642	610	205-220	678-693	£2,330.00	£2,796.00
EPSR1675	1637-1667	610	230-245	678-693	£2,330.00	£2,796.00
EPSR1700	1662-1692	610	255-270	678-693	£2,330.00	£2,796.00
EPSR1725	1687-1717	610	280-295	678-693	£2,416.00	£2,899.20
EPSR1750	1712-1742	610	305-320	678-693	£2,416.00	£2,899.20
EPSR1775	1737-1767	610	330-345	678-693	£2,416.00	£2,899.20
EPSR1800	1762-1792	610	355-370	678-693	£2,416.00	£2,899.20



OPTIONS

HANDING			
Left Hand - LH		Right Hand - RH	
HANDLES			
Linear - LNR (Standard)		Traditional - TRAD	
Curved - CRV		Single Straight - SGL	
FRAME FINISHES		£ EX. VAT	£ INC. VAT
Chrome/Mirror-Polished Stainless Steel - SC (Standard)		-	-
Brushed Steel - ST		£583.00	£699.60
BESPOKE – VISIT OUR ONLINE PRICING TOOL			
<a href="http://www.matki.co.uk/epsr">www.matki.co.uk/epsr</a>			
Bespoke (BES) - heights, widths and glass finishes			

For Matki Measure and Installation Service see page 47.



HOW TO ORDER

- Select CORNER DOOR model and SIDE PANEL model from tables below
- Make choices from OPTIONS table, adding suffix codes to EPSC CORNER DOOR code and surcharges to CORNER DOOR price; standard options will be supplied unless otherwise specified

DIMENSIONS (MM)					PRICES	
CORNER DOOR	A	B	C	D	£ EX. VAT	£ INC. VAT
EPSC1100	1072-1087	430	56	477-497	£1,862.00	£2,234.40
EPSC1125	1097-1112	430	81	477-497	£1,862.00	£2,234.40
EPSC1150	1122-1137	430	106	477-497	£1,862.00	£2,234.40
EPSC1175	1147-1162	430	131	477-497	£1,862.00	£2,234.40
EPSC1200	1172-1187	465	56	523-543	£1,862.00	£2,234.40
EPSC1225	1197-1212	465	81	523-543	£2,123.00	£2,547.60
EPSC1250	1222-1237	465	106	523-543	£2,123.00	£2,547.60
EPSC1275	1247-1262	465	131	523-543	£2,123.00	£2,547.60
EPSC1300	1272-1287	465	156	523-543	£2,123.00	£2,547.60
EPSC1325	1297-1312	465	181	523-543	£2,131.00	£2,557.20
EPSC1350	1322-1337	465	206	523-543	£2,131.00	£2,557.20
EPSC1375	1347-1362	465	231	523-543	£2,131.00	£2,557.20
EPSC1400	1372-1387	465	256	523-543	£2,131.00	£2,557.20
EPSC1425	1397-1412	465	281	523-543	£2,149.00	£2,578.80
EPSC1450	1422-1437	465	306	523-543	£2,149.00	£2,578.80
EPSC1475	1447-1462	465	331	523-543	£2,149.00	£2,578.80
EPSC1500	1472-1487	610	56	678-693	£2,149.00	£2,578.80
EPSC1525	1497-1512	610	81	678-693	£2,224.00	£2,668.80
EPSC1550	1522-1537	610	106	678-693	£2,224.00	£2,668.80
EPSC1575	1547-1562	610	131	678-693	£2,224.00	£2,668.80
EPSC1600	1572-1587	610	156	678-693	£2,224.00	£2,668.80
EPSC1625	1597-1612	610	181	678-693	£2,330.00	£2,796.00
EPSC1650	1622-1637	610	206	678-693	£2,330.00	£2,796.00
EPSC1675	1647-1662	610	231	678-693	£2,330.00	£2,796.00
EPSC1700	1672-1687	610	256	678-693	£2,330.00	£2,796.00
EPSC1725	1697-1712	610	281	678-693	£2,416.00	£2,899.20
EPSC1750	1722-1737	610	306	678-693	£2,416.00	£2,899.20
EPSC1775	1747-1762	610	331	678-693	£2,416.00	£2,899.20
EPSC1800	1772-1787	610	356	678-693	£2,416.00	£2,899.20

SIDE PANEL	E	£ EX. VAT	£ INC. VAT
EPSC700SP	671 – 686	£572.00	£686.40
EPSC760SP	731 – 746	£614.00	£736.80
EPSC800SP	771 – 786	£657.00	£788.40
EPSC900SP	871 – 886	£743.00	£891.60
EPSC1000SP	971 – 986	£846.00	£1,015.20



OPTIONS

HANDING			
Left Hand Corner - LH		Right Hand Corner - RH	
HANDLES			
Linear - LNR (Standard)		Traditional - TRAD	
Curved - CRV		Single Straight - SGL	
FRAME FINISHES		£ EX. VAT	£ INC. VAT
Chrome/Mirror-Polished Stainless Steel - SC (Standard)		-	-
Brushed Steel - ST		£583.00	£699.60
BESPOKE – VISIT OUR ONLINE PRICING TOOL			
<a href="http://www.matki.co.uk/epsc">www.matki.co.uk/epsc</a>			
Bespoke (BES) - heights, widths, side panel shaping and glass finishes			

For Matki Measure and Installation Service see page 47.

50. EPSCREV: REVERSE SLIDING DOOR WITH FIXED PANELS FOR CORNER

HOW TO ORDER

- Select REVERSE CORNER DOOR model and SIDE PANEL model from tables below
- Make choices from OPTIONS table, adding suffix codes to REVERSE CORNER DOOR code and surcharges to REVERSE CORNER DOOR price; standard options will be supplied unless otherwise specified

DIMENSIONS (MM)				PRICES		
REVERSE CORNER DOOR	A	B	C	D	£ EX. VAT	£ INC. VAT
EPSCREV1100	1072-1087	430	56	477-497	£1,862.00	£2,234.40
EPSCREV1125	1097-1112	430	81	477-497	£1,862.00	£2,234.40
EPSCREV1150	1122-1137	430	106	477-497	£1,862.00	£2,234.40
EPSCREV1175	1147-1162	430	131	477-497	£1,862.00	£2,234.40
EPSCREV1200	1172-1187	465	56	523-543	£1,862.00	£2,234.40
EPSCREV1225	1197-1212	465	81	523-543	£2,123.00	£2,547.60
EPSCREV1250	1222-1237	465	106	523-543	£2,123.00	£2,547.60
EPSCREV1275	1247-1262	465	131	523-543	£2,123.00	£2,547.60
EPSCREV1300	1272-1287	465	156	523-543	£2,123.00	£2,547.60
EPSCREV1325	1297-1312	465	181	523-543	£2,131.00	£2,557.20
EPSCREV1350	1322-1337	465	206	523-543	£2,131.00	£2,557.20
EPSCREV1375	1347-1362	465	231	523-543	£2,131.00	£2,557.20
EPSCREV1400	1372-1387	465	256	523-543	£2,131.00	£2,557.20
EPSCREV1425	1397-1412	465	281	523-543	£2,149.00	£2,578.80
EPSCREV1450	1422-1437	465	306	523-543	£2,149.00	£2,578.80
EPSCREV1475	1447-1462	465	331	523-543	£2,149.00	£2,578.80
EPSCREV1500	1472-1487	610	56	678-693	£2,149.00	£2,578.80
EPSCREV1525	1497-1512	610	81	678-693	£2,224.00	£2,668.80
EPSCREV1550	1522-1537	610	106	678-693	£2,224.00	£2,668.80
EPSCREV1575	1547-1562	610	131	678-693	£2,224.00	£2,668.80
EPSCREV1600	1572-1587	610	156	678-693	£2,224.00	£2,668.80
EPSCREV1625	1597-1612	610	181	678-693	£2,330.00	£2,796.00
EPSCREV1650	1622-1637	610	206	678-693	£2,330.00	£2,796.00
EPSCREV1675	1647-1662	610	231	678-693	£2,330.00	£2,796.00
EPSCREV1700	1672-1687	610	256	678-693	£2,330.00	£2,796.00
EPSCREV1725	1697-1712	610	281	678-693	£2,416.00	£2,899.20
EPSCREV1750	1722-1737	610	306	678-693	£2,416.00	£2,899.20
EPSCREV1775	1747-1762	610	331	678-693	£2,416.00	£2,899.20
EPSCREV1800	1772-1787	610	356	678-693	£2,416.00	£2,899.20
SIDE PANEL		E			£ EX. VAT	£ INC. VAT
EPSCREV700SP		671 – 686			£572.00	£686.40
EPSCREV760SP		731 – 746			£614.00	£736.80
EPSCREV800SP		771 – 786			£657.00	£788.40
EPSCREV900SP		871 – 886			£743.00	£891.60
EPSCREV1000SP		971 – 986			£846.00	£1,015.20



OPTIONS

HANDING		
Left Hand Corner – LH		Right Hand Corner – RH
HANDLES		
Linear – LNR (Standard)		Traditional – TRAD
Curved – CRV		Single Straight – SGL
FRAME FINISHES		
	£ EX. VAT	£ INC. VAT
Chrome/Mirror-Polished Stainless Steel – SC (Standard)	-	-
Brushed Steel – ST	£583.00	£699.60
BESPOKE – VISIT OUR ONLINE PRICING TOOL		
<a href="http://www.matki.co.uk/epscrev">www.matki.co.uk/epscrev</a>		
Bespoke (BES) – heights, widths, side panel shaping and glass finishes		

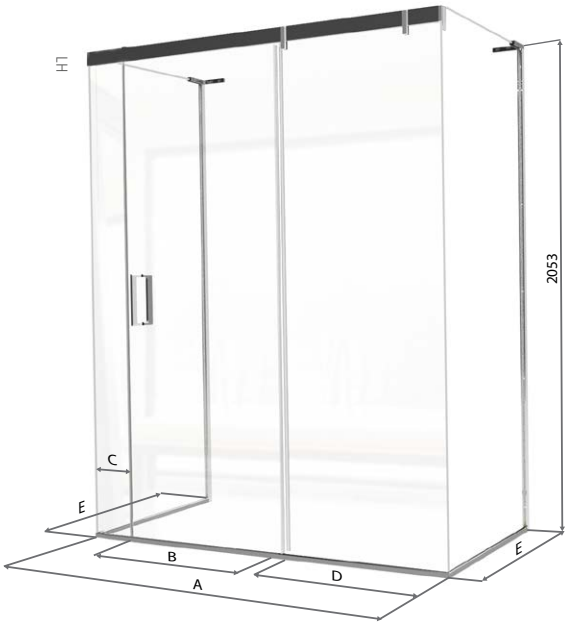
For Matki Measure and Installation Service see page 47.



HOW TO ORDER

- Select THREE-SIDED DOOR model and SIDE PANEL models sizes then Options from table
- Make choices from OPTIONS table, adding suffix codes to THREE-SIDED DOOR price code and surcharges to THREE-SIDED DOOR price; standard options will be supplied unless otherwise specified

DIMENSIONS (MM)					PRICES	
THREE-SIDED DOOR	A	B	C	D	£ EX. VAT	£ INC. VAT
EPST1100	1090	430	55-70	477-497	£1,862.00	£2,234.40
EPST1125	1115	430	80-95	477-497	£1,862.00	£2,234.40
EPST1150	1140	430	105-120	477-497	£1,862.00	£2,234.40
EPST1175	1165	430	130-145	477-497	£1,862.00	£2,234.40
EPST1200	1190	465	55-70	523-543	£1,862.00	£2,234.40
EPST1225	1215	465	80-95	523-543	£2,123.00	£2,547.60
EPST1250	1240	465	105-120	523-543	£2,123.00	£2,547.60
EPST1275	1265	465	130-145	523-543	£2,123.00	£2,547.60
EPST1300	1290	465	155-170	523-543	£2,123.00	£2,547.60
EPST1325	1315	465	180-195	523-543	£2,131.00	£2,557.20
EPST1350	1340	465	205-220	523-543	£2,131.00	£2,557.20
EPST1375	1365	465	230-245	523-543	£2,131.00	£2,557.20
EPST1400	1390	465	255-270	523-543	£2,131.00	£2,557.20
EPST1425	1415	465	280-295	523-543	£2,149.00	£2,578.80
EPST1450	1440	465	305-320	523-543	£2,149.00	£2,578.80
EPST1475	1465	465	330-345	523-543	£2,149.00	£2,578.80
EPST1500	1490	610	55-70	678-693	£2,149.00	£2,578.80
EPST1525	1515	610	80-95	678-693	£2,224.00	£2,668.80
EPST1550	1540	610	105-120	678-693	£2,224.00	£2,668.80
EPST1575	1565	610	130-145	678-693	£2,224.00	£2,668.80
EPST1600	1590	610	155-170	678-693	£2,224.00	£2,668.80
EPST1625	1615	610	180-195	678-693	£2,330.00	£2,796.00
EPST1650	1640	610	205-220	678-693	£2,330.00	£2,796.00
EPST1675	1665	610	230-245	678-693	£2,330.00	£2,796.00
EPST1700	1690	610	255-270	678-693	£2,330.00	£2,796.00
EPST1725	1715	610	280-295	678-693	£2,416.00	£2,899.20
EPST1750	1740	610	305-320	678-693	£2,416.00	£2,899.20
EPST1775	1765	610	330-345	678-693	£2,416.00	£2,899.20
EPST1800	1790	610	355-370	678-693	£2,416.00	£2,899.20
SIDE PANEL (ADD 2)			E		£ EX. VAT	£ INC. VAT
EPST700SP			671 – 686		£572.00	£686.40
EPST760SP			731 – 746		£614.00	£736.80
EPST800SP			771 – 786		£657.00	£788.40
EPST900SP			871 – 886		£743.00	£891.60
EPST1000SP			971 – 986		£846.00	£1,015.20



OPTIONS

HANDLING		
Left Hand - LH		Right Hand - RH
HANDLES		
Linear - LNR (Standard)		Traditional - TRAD
Curved - CRV		Single Straight - SGL
FRAME FINISHES		
	£ EX. VAT	£ INC. VAT
Chrome/Mirror-Polished Stainless Steel - SC (Standard)	-	-
Brushed Steel - ST	£616.00	£739.20
BESPOKE – VISIT OUR ONLINE PRICING TOOL		
<a href="http://www.matki.co.uk/epst">www.matki.co.uk/epst</a>		
Bespoke (BES) - heights, widths, side panel shaping and glass finishes		

For Matki Measure and Installation Service see page 47.

52. ECS: CURVED CORNER

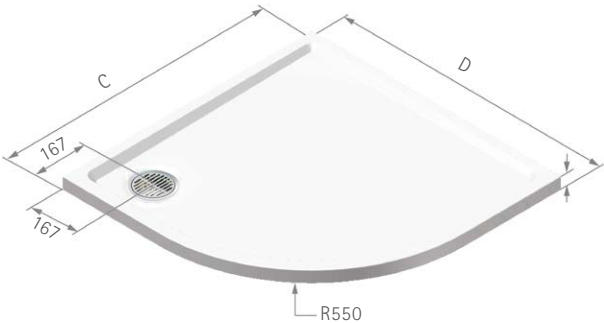
HOW TO ORDER

- Select CURVED model from tables below, choosing with or without shower tray
- Make choices from OPTIONS table, adding suffix codes to CURVED or CURVED + TRAY code and surcharges to the model prices; standard options will be supplied unless otherwise specified

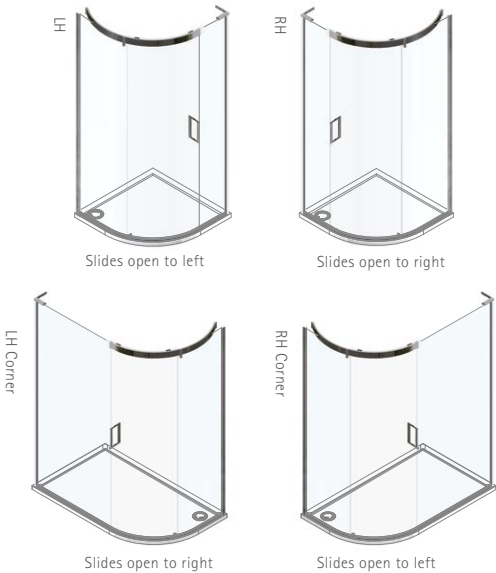
DIMENSIONS (MM)		PRICES		
CURVED	A	B	£ EX. VAT	£ INC. VAT
ECS900	876 - 890	325 - 340	£3,044.00	£3,652.80
ECS1290	1176 - 1190	625 - 640	£3,202.00	£3,842.40
ECS1590	1476 - 1490	925 - 940	£3,372.00	£4,046.40
CURVED + TRAY	C	D	£ EX. VAT	£ INC. VAT
ECS900T	900	900	£3,488.00	£4,185.60
ECS1290T	1200	900	£3,703.00	£4,443.60
ECS1590T	1500	900	£3,898.00	£4,677.60

Choose from CLC or ULC tray models on page 90, for standard sizes; MP and MF models on page 89 can be used for bespoke sizes. Waste for CLC and ULC trays is located in RH Corner for ECS1200T and ECS1500T models with LH corner handing, and in LH corner for all other models.

For Matki Measure and Installation Service see page 47.



CONFIGURATIONS & HANDING



OPTIONS

HANDING		
ECS900, ECS900T	Left Hand - LH	Right Hand - RH
ECS1290, ECS1590, ECS1290T, ECS1590T	Left Hand Corner - LH	Right Hand Corner - RH

HANDLES	
Linear - LNR (Standard)	Traditional - TRAD
Curved - CRV	Single Straight - SGL

FRAME FINISHES	£ EX. VAT	£ INC. VAT
Chrome/Mirror-Polished Stainless Steel (Standard) - SC	-	-
Brushed Steel - ST	£583.00	£699.60

BESPOKE – VISIT OUR ONLINE PRICING TOOL	
<a href="http://www.matki.co.uk/ecs">www.matki.co.uk/ecs</a>	
Bespoke (BES) - Panel B widths and shaping	

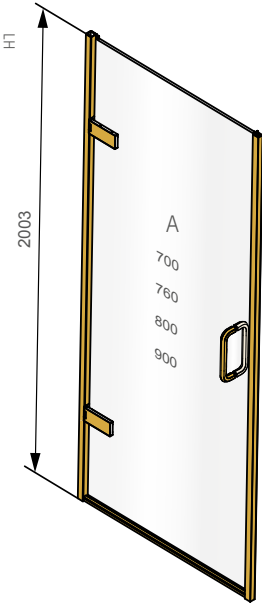


HOW TO ORDER

- Select RECESS model from table below
- Make choices from OPTIONS table, adding suffix codes to EPR RECESS code and surcharges to RECESS price; Standard options will be supplied unless otherwise specified

DIMENSIONS (MM)		PRICES	
RECESS	A	£ EX. VAT	£ INC. VAT
EPR700	670 - 700	£1,379.00	£1,654.80
EPR760	730 - 760	£1,398.00	£1,677.60
EPR800	770 - 800	£1,416.00	£1,699.20
EPR900	870 - 900	£1,452.00	£1,742.40

For Matki Measure and Installation Service see page 47.



OPTIONS

HANDING		DOOR OPENING	
Left Hand - LH	Right Hand - RH	Outwards (Standard)	Inwards - INW (Add £55 ex VAT)

HANDLES	
Linear - LNR (Standard)	Traditional - TRAD
Ⓢ Illustrious - IST	Ⓢ Engineer - ENG (Add £110 ex VAT)

FRAME ACCENTS	£ EX. VAT	£ INC. VAT
None (Standard)	-	-
EPR Frame Accent Pack - FVP*	£356.00	£427.20

\*Only available in Ⓢ finishes, not available on Inward Opening

FRAME FINISHES	£ EX. VAT	£ INC. VAT
Sliver/Chrome - SC (Standard)	-	-
Matt Black - MB	£491.00	£589.20
Ⓢ Polished Chrome - CP	£1,746.00	£2,095.20
Ⓢ Living Brass - LB*	£1,586.00	£1,903.20
Ⓢ Polished Nickel - NP / Brushed Brass - BB*	£1,972.00	£2,366.40
Ⓢ Brushed Nickel - NB / Living Copper - LC*	£2,134.00	£2,560.80
Ⓢ Polished Gold - MG	£2,144.00	£2,572.80
Ⓢ Brushed Gold - GB / Dark Bronze - DB*	£2,297.00	£2,756.40
Aged Brass - AB*		

\* Living finishes please see page 43.

BESPOKE – VISIT OUR ONLINE PRICING TOOL
<a href="http://www.matki.co.uk/epr">www.matki.co.uk/epr</a>
Bespoke (BES) - heights, widths, frame types, shaping and glass finishes

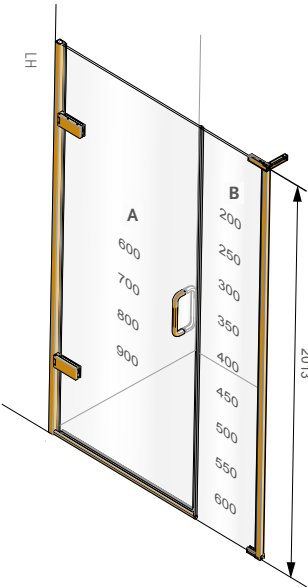
54. EPW: HINGE DOOR WITH INLINE PANEL FOR RECESS

HOW TO ORDER

- Select RECESS Model from table below
- Alternative standard door and panel combinations are available at the same price for each model size. The drawing opposite shows the standard panel sizes available
- Make choices from OPTIONS table, adding suffix codes to EPW RECESS code and surcharges to RECESS price; Standard options will be supplied unless otherwise specified

DIMENSIONS (MM)				PRICES	
RECESS	A + B	A	B	£ EX. VAT	£ INC. VAT
EPW800	770 – 800	600	200	£1,682.00	£2,018.40
EPW850	820 – 850	600	250	£1,699.00	£2,038.80
EPW900	870 – 900	700	200	£1,699.00	£2,038.80
EPW950	920 – 950	700	250	£1,716.00	£2,059.20
EPW1000	970 – 1000	800	200	£1,725.00	£2,070.00
EPW1050	1020 – 1050	800	250	£1,742.00	£2,090.40
EPW1100	1070 – 1100	900	200	£1,764.00	£2,116.80
EPW1150	1120 – 1150	900	250	£1,781.00	£2,137.20
EPW1200	1170 – 1200	700	500	£1,809.00	£2,170.80
EPW1250	1220 – 1250	800	450	£1,826.00	£2,191.20
EPW1300	1270 – 1300	900	400	£1,845.00	£2,214.00
EPW1350	1320 – 1350	900	450	£1,865.00	£2,238.00
EPW1400	1370 – 1400	900	500	£1,874.00	£2,248.80
EPW1450	1420 – 1450	900	550	£1,890.00	£2,268.00
EPW1500	1470 – 1500	900	600	£1,909.00	£2,290.80

For Matki Measure and Installation Service see page 47.



OPTIONS

HANDING		DOOR OPENING	
Left Hand - LH	Right Hand - RH	Outwards (Standard)	Inwards - INW (Add £55 ex VAT)
HANDLES			
Linear - LNR (Standard)		Traditional - TRAD	
Ⓢ Illustrious - IST		Ⓢ Engineer - ENG (Add £110 ex VAT)	
FRAME ACCENTS		£ EX. VAT	£ INC. VAT
None (Standard)		-	-
EPW Frame Accent Pack - FVP*		£356.00	£427.20
*Only available in Ⓢ finishes, not available on Inward Opening			

FRAME FINISHES	£ EX. VAT	£ INC. VAT
Sliver/Chrome - SC (Standard)	-	-
Matt Black - MB	£421.00	£505.20
Ⓢ Polished Chrome - CP	£1,036.00	£1,243.20
Ⓢ Living Brass - LB*	£874.00	£1,048.80
Ⓢ Polished Nickel - NP / Brushed Brass - BB*	£1,274.00	£1,528.80
Ⓢ Brushed Nickel - NB / Living Copper - LC*	£1,441.00	£1,729.20
Ⓢ Polished Gold - MG	£1,460.00	£1,752.00
Ⓢ Brushed Gold - GB / Dark Bronze - DB*	£1,635.00	£1,962.00
Aged Brass - AB*		

\* Living finishes please see page 43.

BESPOKE – VISIT OUR ONLINE PRICING TOOL

[www.matki.co.uk/epw](http://www.matki.co.uk/epw)

Bespoke (BES) - heights, widths, frame types, shaping and glass finishes

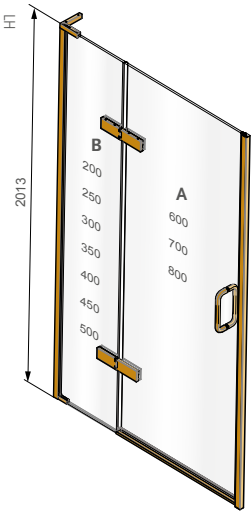


HOW TO ORDER

- Select RECESS Model from table below
- Alternative standard door and panel combinations are available at the same price for each model size. The drawing opposite shows the standard panel sizes available
- Make choices from OPTIONS table, adding suffix codes to EPH RECESS code and surcharges to RECESS price; Standard options will be supplied unless otherwise specified

DIMENSIONS (MM)				PRICES	
RECESS	A + B	A	B	£ EX. VAT	£ INC. VAT
EPH800	770 - 800	600	200	£2,000.00	£2,400.00
EPH850	820 - 850	600	250	£2,015.00	£2,418.00
EPH900	870 - 900	700	200	£2,015.00	£2,418.00
EPH950	920 - 950	700	250	£2,030.00	£2,436.00
EPH1000	970 - 1000	800	200	£2,050.00	£2,460.00
EPH1050	1020 - 1050	800	250	£2,065.00	£2,478.00
EPH1100	1070 - 1100	700	400	£2,083.00	£2,499.60
EPH1150	1120 - 1150	700	450	£2,105.00	£2,526.00
EPH1200	1170 - 1200	700	500	£2,121.00	£2,545.20
EPH1250	1220 - 1250	800	450	£2,140.00	£2,568.00
EPH1300	1270 - 1300	800	500	£2,156.00	£2,587.20

For Matki Measure and Installation Service see page 47.



OPTIONS

HANDING		DOOR OPENING	
Left Hand - LH	Right Hand - RH	Outwards (Standard)	
HANDLES			
Linear - LNR (Standard)		Traditional - TRAD	
S Illustrious – IST		S Engineer - ENG (Add £110 ex VAT)	
FRAME ACCENTS		£ EX. VAT	£ INC. VAT
None (Standard)		-	-
EPH Frame Accent Pack - FVP*		£667.00	£800.40

\*Only available in S finishes below

FRAME FINISHES	£ EX. VAT	£ INC. VAT
Sliver/Chrome - SC (Standard)	-	-
Matt Black - MB	£421.00	£505.20
S Polished Chrome - CP	£1,036.00	£1,243.20
S Living Brass - LB*	£874.00	£1,048.80
S Polished Nickel - NP / Brushed Brass - BB*	£1,274.00	£1,528.80
S Brushed Nickel - NB / Living Copper - LC*	£1,441.00	£1,729.20
S Polished Gold - MG	£1,460.00	£1,752.00
S Brushed Gold - GB / Dark Bronze - DB*	£1,635.00	£1,962.00
Aged Brass - AB*		

\* Living finishes please see page 43.

BESPOKE – VISIT OUR ONLINE PRICING TOOL
<a href="http://www.matki.co.uk/eph">www.matki.co.uk/eph</a>
Bespoke (BES) - heights, widths, frame types, shaping and glass finishes

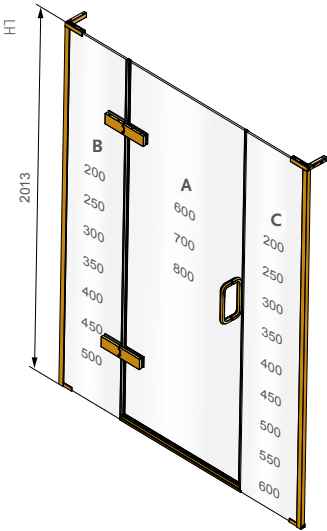
56. EPI: HINGED DOOR WITH HINGE PANEL AND INLINE PANEL FOR RECESS

HOW TO ORDER

- Select RECESS model from table below
- Alternative standard door and panel combinations are available at the same price for each model size. The drawing opposite shows the standard panel sizes available
- Make choices from OPTIONS table, adding suffix codes to EPI RECESS code and surcharges to RECESS price; Standard options will be supplied unless otherwise specified

DIMENSIONS (MM)				PRICES		
RECESS	A + B + C	A	B	C	£ EX. VAT	£ INC. VAT
EPI1000	970 - 1000	600	200	200	£2,271.00	£2,725.20
EPI1050	1020 - 1050	600	250	200	£2,287.00	£2,744.40
EPI1100	1070 - 1100	700	200	200	£2,295.00	£2,754.00
EPI1150	1120 - 1150	700	250	200	£2,311.00	£2,773.20
EPI1200	1170 - 1200	800	200	200	£2,330.00	£2,796.00
EPI1250	1220 - 1250	800	250	200	£2,346.00	£2,815.20
EPI1300	1270 - 1300	700	200	400	£2,369.00	£2,842.80
EPI1350	1320 - 1350	800	250	300	£2,380.00	£2,856.00
EPI1400	1370 - 1400	800	200	400	£2,404.00	£2,884.80
EPI1450	1420 - 1450	800	250	400	£2,418.00	£2,901.60
EPI1500	1470 - 1500	700	400	400	£2,437.00	£2,924.40
EPI1550	1520 - 1550	800	400	350	£2,455.00	£2,946.00
EPI1600	1570 - 1600	800	400	400	£2,472.00	£2,966.40
EPI1650	1620 - 1650	800	450	400	£2,493.00	£2,991.60
EPI1700	1670 - 1700	800	450	450	£2,510.00	£3,012.00
EPI1750	1720 - 1750	800	500	450	£2,515.00	£3,018.00
EPI1800	1770 - 1800	800	500	500	£2,543.00	£3,051.60
EPI1850	1820 - 1850	800	500	550	£2,556.00	£3,067.20
EPI1900	1870 - 1900	800	500	600	£2,571.00	£3,085.20

For Matki Measure and Installation Service see page 47.



OPTIONS

HANDING		DOOR OPENING	
Not Handed		Outwards (Standard)	Inwards - INW
HANDLES			
Linear - LNR (Standard)		Traditional - TRAD	
S Illustrious - IST		S Engineer - ENG (Add £110 ex VAT)	
FRAME ACCENTS		£ EX. VAT	£ INC. VAT
None (Standard)		-	-
EPI Frame Accent Pack - FVP*		£667.00	£800.40
*Only available in S finishes, not available on Inward Opening.			
FRAME FINISHES		£ EX. VAT	£ INC. VAT
Sliver/Chrome - SC (Standard)		-	-
Matt Black - MB		£256.00	£307.20
S Polished Chrome - CP		£647.00	£776.40
S Living Brass - LB*		£518.00	£621.60
S Polished Nickel - NP / Brushed Brass - BB*		£897.00	£1,076.40
S Brushed Nickel - NB / Living Copper - LC*		£1,070.00	£1,284.00
S Polished Gold - MG		£1,099.00	£1,318.80
S Brushed Gold - GB / Dark Bronze - DB*		£1,293.00	£1,551.60
Aged Brass - AB*			

\* Living finishes please see page 43.

BESPOKE – VISIT OUR ONLINE PRICING TOOL

[www.matki.co.uk/epi](http://www.matki.co.uk/epi)

Bespoke (BES) - heights, widths, frame types, shaping and glass finishes

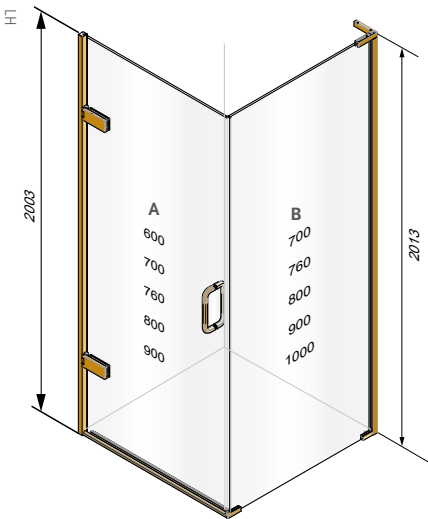


HOW TO ORDER

- Select CORNER DOOR and SIDE PANEL models from tables below
- Alternative standard door and panel combinations are available at the same price for each model size. The drawing opposite shows the standard panel sizes available
- Make choices from OPTIONS table, adding suffix codes to EPC CORNER DOOR code and surcharges to CORNER DOOR price; standard options will be supplied unless otherwise specified

DIMENSIONS (MM)		PRICES	
CORNER DOOR	A	£ EX. VAT	£ INC. VAT
EPC600	569 - 584	£1,440.00	£1,728.00
EPC700	669 - 684	£1,457.00	£1,748.40
EPC760	729 - 744	£1,474.00	£1,768.80
EPC800	769 - 784	£1,485.00	£1,782.00
EPC900	869 - 884	£1,520.00	£1,824.00
SIDE PANEL	B	£ EX. VAT	£ INC. VAT
EPC700SP	670 - 685	£438.00	£525.60
EPC760SP	730 - 745	£443.00	£531.60
EPC800SP	770 - 785	£453.00	£543.60
EPC900SP	870 - 885	£488.00	£585.60
EPC1000SP	970 - 985	£524.00	£628.80

For Matki Measure and Installation Service see page 47.



OPTIONS

HANDING		DOOR OPENING
Left Hand Corner - LH	Right Hand Corner - RH	Outwards (Standard)
HANDLES		
Linear - LNR (Standard)		Traditional - TRAD
S Illustrious - IST		S Engineer - ENG (Add £110 ex VAT)
FRAME ACCENTS		
	£ EX. VAT	£ INC. VAT
None (Standard)	-	-
EPC Frame Accent Pack - FVP*	£356.00	£427.20

\*Only available in S finishes.

FRAME FINISHES	£ EX. VAT	£ INC. VAT
Sliver/Chrome - SC (Standard)	-	-
Matt Black - MB	£421.00	£505.20
S Polished Chrome - CP	£1,036.00	£1,243.20
S Living Brass - LB*	£874.00	£1,048.80
S Polished Nickel - NP / Brushed Brass - BB*	£1,274.00	£1,528.80
S Brushed Nickel - NB / Living Copper - LC*	£1,441.00	£1,729.20
S Polished Gold - MG	£1,460.00	£1,752.00
S Brushed Gold - GB / Dark Bronze - DB*	£1,635.00	£1,962.00
Aged Brass - AB*		

\* Living finishes please see page 43.

BESPOKE – VISIT OUR ONLINE PRICING TOOL
<a href="http://www.matki.co.uk/epc">www.matki.co.uk/epc</a>
Bespoke (BES) - heights, widths, frame types, shaping and glass finishes

58. EPWC: HINGED DOOR FROM WALL AND INLINE PANEL FOR CORNER

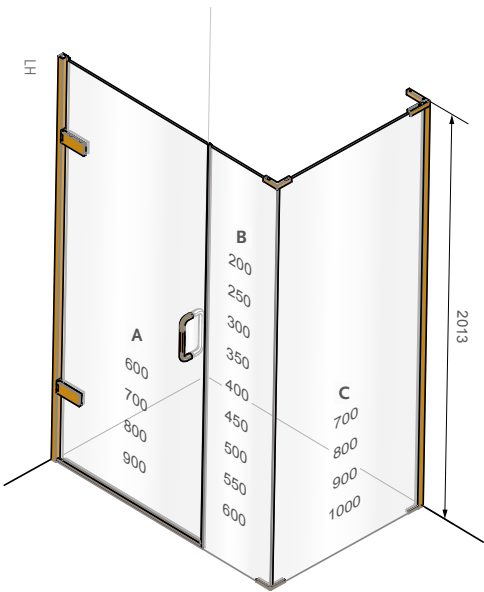
HOW TO ORDER

- Select CORNER DOOR and SIDE PANEL models from tables below
- Alternative standard door and panel combinations are available at the same price for each model size. The drawing opposite shows the standard panel sizes available
- Make choices from OPTIONS table, adding suffix codes to EPWC CORNER DOOR code and surcharges to CORNER DOOR price; standard options will be supplied unless otherwise specified
- Also available on request with door hinged off inline panel (B), price on application

DIMENSIONS (MM)			PRICES		
CORNER DOOR	A + B	A	B	£ EX. VAT	£ INC. VAT
EPWC800	768 - 783	600	200	£1,810.00	£2,172.00
EPWC850	818 - 833	600	250	£1,827.00	£2,192.40
EPWC900	868 - 883	700	200	£1,827.00	£2,192.40
EPWC950	918 - 933	700	250	£1,844.00	£2,212.80
EPWC1000	968 - 983	800	200	£1,853.00	£2,223.60
EPWC1050	1018 - 1033	800	250	£1,870.00	£2,244.00
EPWC1100	1068 - 1083	900	200	£1,892.00	£2,270.40
EPWC1150	1118 - 1133	900	250	£1,909.00	£2,290.80
EPWC1200	1168 - 1183	800	400	£1,934.00	£2,320.80
EPWC1250	1218 - 1233	800	450	£1,954.00	£2,344.80
EPWC1300	1268 - 1283	900	400	£1,973.00	£2,367.60
EPWC1350	1318 - 1333	900	450	£1,993.00	£2,391.60
EPWC1400	1368 - 1383	900	500	£2,002.00	£2,402.40
EPWC1450	1418 - 1433	900	550	£2,018.00	£2,421.60
EPWC1500	1468 - 1483	900	600	£2,037.00	£2,444.40

SIDE PANEL	C	£ EX. VAT	£ INC. VAT
EPWC700SP	666 - 681	£446.00	£535.20
EPWC760SP	726 - 741	£453.00	£543.60
EPWC800SP	766 - 781	£461.00	£553.20
EPWC900SP	866 - 881	£497.00	£596.40
EPWC1000SP	966 - 981	£530.00	£636.00

For Matki Measure and Installation Service see page 47.



OPTIONS

HANDING		DOOR OPENING	
Left Hand Corner - LH	Right Hand Corner - RH	Outwards (Standard)	Inwards - INW (Add £55 ex VAT)
HANDLES			
Linear - LNR (Standard)		Traditional - TRAD	
S Illustrious - IST		S Engineer - ENG (Add £110 ex VAT)	
FRAME ACCENTS		£ EX. VAT	£ INC. VAT
None (Standard)		-	-
EPWC Frame Accent Pack - FVP*		£667.00	£800.40
FRAME FINISHES			
Silver/Chrome - SC (Standard)		-	-
Matt Black - MB		£421.00	£505.20
S Polished Chrome - CP		£1,036.00	£1,243.20
S Living Brass - LB*		£874.00	£1,048.80
S Polished Nickel - NP / Brushed Brass - BB*		£1,274.00	£1,528.80
S Brushed Nickel - NB / Living Copper - LC*		£1,441.00	£1,729.20
S Polished Gold - MG		£1,460.00	£1,752.00
S Brushed Gold - GB / Dark Bronze - DB*		£1,635.00	£1,962.00
Aged Brass - AB*			

\* Living finishes please see page 43.

BESPOKE – VISIT OUR ONLINE PRICING TOOL	
<a href="http://www.matki.co.uk/epwc">www.matki.co.uk/epwc</a>	
Bespoke (BES) - heights, widths, frame types, shaping and glass finishes	

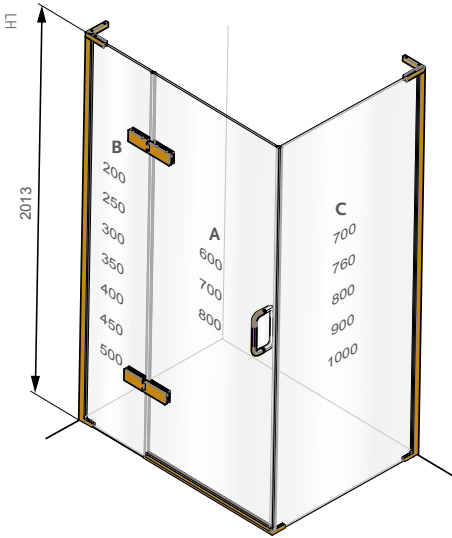


HOW TO ORDER

- Select CORNER DOOR and SIDE PANEL models from tables below
- Alternative standard door and panel combinations are available at the same price for each model size. The drawing opposite shows the standard panel sizes available
- Make choices from OPTIONS table, adding suffix codes to EPHC CORNER DOOR code and surcharges to CORNER DOOR price; standard options will be supplied unless otherwise specified

DIMENSIONS (MM)				PRICES	
CORNER DOOR	A + B	A	B	£ EX. VAT	£ INC. VAT
EPHC800	769 - 784	600	200	£2,060.00	£2,472.00
EPHC850	819 - 834	600	250	£2,075.00	£2,490.00
EPHC900	869 - 884	700	200	£2,084.00	£2,500.80
EPHC950	919 - 934	700	250	£2,099.00	£2,518.80
EPHC1000	969 - 984	800	200	£2,119.00	£2,542.80
EPHC1050	1019 - 1034	800	250	£2,134.00	£2,560.80
EPHC1100	1069 - 1084	700	400	£2,152.00	£2,582.40
EPHC1150	1119 - 1134	700	450	£2,174.00	£2,608.80
EPHC1200	1169 - 1184	700	500	£2,190.00	£2,628.00
EPHC1250	1219 - 1234	800	450	£2,209.00	£2,650.80
EPHC1300	1269 - 1284	800	500	£2,225.00	£2,670.00
SIDE PANEL	C			£ EX. VAT	£ INC. VAT
EPHC700SP	670 - 685			£438.00	£525.60
EPHC760SP	730 - 745			£443.00	£531.60
EPHC800SP	770 - 785			£453.00	£543.60
EPHC900SP	870 - 885			£488.00	£585.60
EPHC1000SP	970 - 985			£524.00	£628.80

For Matki Measure and Installation Service see page 47.



OPTIONS

HANDING

Left Hand Corner - LH    Right Hand Corner - RH    Outwards (Standard)

DOOR OPENING

HANDLES

Linear - LNR (Standard)    Traditional - TRAD  
Ⓢ Illustrious - IST    Ⓢ Engineer - ENG (Add £110 ex VAT)

FRAME ACCENTS

	£ EX. VAT	£ INC. VAT
None (Standard)	-	-
EPHC Frame Accent Pack - FVP*	£667.00	£800.40

\*Only available in Ⓢ finishes.

FRAME FINISHES

	£ EX. VAT	£ INC. VAT
Sliver/Chrome - SC (Standard)	-	-
Matt Black - MB	£256.00	£307.20
Ⓢ Polished Chrome - CP	£647.00	£776.40
Ⓢ Living Brass - LB*	£518.00	£621.60
Ⓢ Polished Nickel - NP / Brushed Brass - BB*	£897.00	£1,076.40
Ⓢ Brushed Nickel - NB / Living Copper - LC*	£1,070.00	£1,284.00
Ⓢ Polished Gold - MG	£1,099.00	£1,318.80
Ⓢ Brushed Gold - GB / Dark Bronze - DB*	£1,293.00	£1,551.60
Aged Brass - AB*		

\* Living finishes please see page 43.

BESPOKE – VISIT OUR ONLINE PRICING TOOL

[www.matki.co.uk/ephc](http://www.matki.co.uk/ephc)

Bespoke (BES) - heights, widths, frame types, shaping and glass finishes

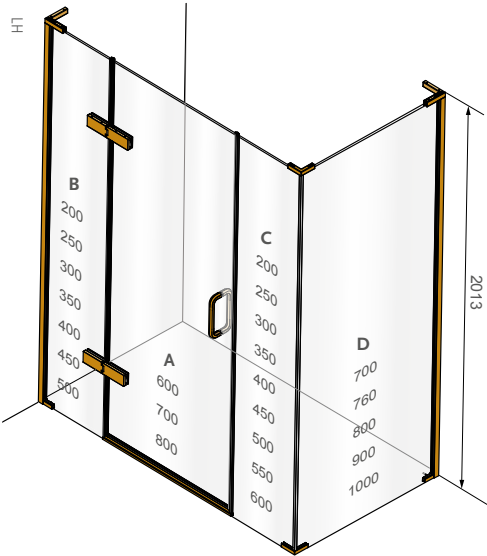
60. EPIC: EAUZONE HINGED DOOR WITH HINGE PANEL AND INLINE PANEL FOR CORNER

HOW TO ORDER

- Select CORNER DOOR and SIDE PANEL models from tables below
- Alternative standard door and panel combinations are available at the same price for each model size. The drawing opposite shows the standard panel sizes available
- Make choices from OPTIONS table, adding suffix codes to EPIC CORNER DOOR code and surcharges to CORNER DOOR price; standard options will be supplied unless otherwise specified

DIMENSIONS (MM)					PRICES	
DOOR	A + B + C	A	B	C	£ EX. VAT	£ INC. VAT
EPIC1000	969 - 984	600	200	200	£2,429.00	£2,914.80
EPIC1050	1019 - 1034	600	250	200	£2,445.00	£2,934.00
EPIC1100	1069 - 1084	700	200	200	£2,453.00	£2,943.60
EPIC1150	1119 - 1134	700	250	200	£2,469.00	£2,962.80
EPIC1200	1169 - 1184	800	200	200	£2,488.00	£2,985.60
EPIC1250	1219 - 1234	800	250	200	£2,504.00	£3,004.80
EPIC1300	1269 - 1284	700	200	400	£2,527.00	£3,032.40
EPIC1350	1319 - 1334	800	300	250	£2,541.00	£3,049.20
EPIC1400	1369 - 1384	800	200	400	£2,562.00	£3,074.40
EPIC1450	1419 - 1434	800	300	350	£2,577.00	£3,092.40
EPIC1500	1469 - 1484	700	400	400	£2,595.00	£3,114.00
EPIC1550	1519 - 1534	800	350	400	£2,615.00	£3,138.00
EPIC1600	1569 - 1584	800	400	400	£2,630.00	£3,156.00
EPIC1650	1619 - 1634	800	400	450	£2,646.00	£3,175.20
EPIC1700	1669 - 1684	800	450	450	£2,668.00	£3,201.60
EPIC1750	1719 - 1734	800	500	450	£2,673.00	£3,207.60
EPIC1800	1769 - 1784	800	500	500	£2,701.00	£3,241.20
EPIC1850	1819 - 1834	800	500	550	£2,714.00	£3,256.80
EPIC1900	1869 - 1884	800	500	600	£2,729.00	£3,274.80
SIDE PANEL		D			£ EX. VAT	£ INC. VAT
EPIC700SP		666 - 681			£446.00	£535.20
EPIC760SP		726 - 741			£453.00	£543.60
EPIC800SP		766 - 781			£461.00	£553.20
EPIC900SP		866 - 881			£497.00	£596.40
EPIC1000SP		966 - 981			£530.00	£636.00

For Matki Measure and Installation Service see page 47.



OPTIONS

HANDING		DOOR OPENING	
Left Hand Corner - LH	Right Hand Corner - RH	Outwards (Standard)	Inwards - INW
HANDLES			
Linear - LNR (Standard)		Traditional - TRAD	
S Illustrious - IST		S Engineer - ENG (Add £110 ex VAT)	
FRAME ACCENTS		£ EX. VAT	£ INC. VAT
None (Standard)		-	-
EPIC Frame Accent Pack - FVP*		£978.00	£1,173.60
*Only available in S finishes, not available on Inward Opening.			
FRAME FINISHES		£ EX. VAT	£ INC. VAT
Sliver/Chrome - SC (Standard)		-	-
Matt Black - MB		£256.00	£307.20
S Polished Chrome - CP		£647.00	£776.40
S Living Brass - LB*		£518.00	£621.60
S Polished Nickel - NP / Brushed Brass - BB*		£897.00	£1,076.40
S Brushed Nickel - NB / Living Copper - LC*		£1,070.00	£1,284.00
S Polished Gold - MG		£1,099.00	£1,318.80
S Brushed Gold - GB / Dark Bronze - DB*		£1,293.00	£1,551.60
Aged Brass - AB*			

\* Living finishes please see page 43.

BESPOKE – VISIT OUR ONLINE PRICING TOOL

[www.matki.co.uk/epic](http://www.matki.co.uk/epic)

Bespoke (BES) – heights, widths, frame types, shaping and glass finishes



HOW TO ORDER

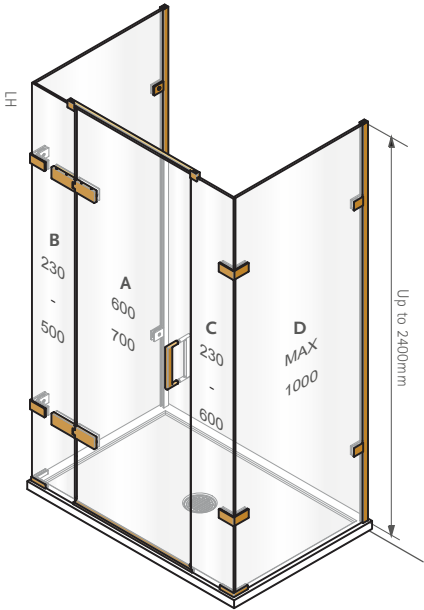
- Select Bespoke THREE-SIDED DOOR and SIDE PANEL models from tables below
- Make choices from OPTIONS table, adding suffix codes to EPIT CORNER DOOR code and surcharges to THREE-SIDED DOOR price; Standard options will be supplied unless otherwise specified
- Bespoke (BES) sizes are listed for standard framing. Please see website for alternative frame types

DIMENSIONS (MM)					PRICES	
CORNER DOOR	A + B + C	A	B	C	£ EX. VAT	£ INC. VAT
EPIT1300BES	1100 to 1300mm	Max 700	Min 230	Min 230	£3,320.00	£3,984.00
EPIT1500BES	Up to 1500mm	Max 700	Min 230	Min 230	£3,454.00	£4,144.80
EPIT1700BES	Up to 1700mm	Max 700	Min 230	Min 230	£3,635.00	£4,362.00
EPIT1900BES	Up to 1900mm	Max 700	Min 230	Min 230	£3,712.00	£4,454.40
EPIT2100BES	Up to 2100mm	Max 700	Min 230	Min 230	£3,847.00	£4,616.40
EPIT2500BES	Up to 2500mm	Max 700	Min 230	Min 230	£4,126.00	£4,951.20

SIDE PANEL (ADD 2)	D + E	£ EX. VAT	£ INC. VAT
EPIT800SPBES	Up to 800mm	£1,313.00	£1,576.60
EPIT1000SPBES	Up to 1000mm	£1,377.00	£1,652.40
EPIT1200SPBES	Up to 1200mm	£1,512.00	£1,814.40
EPIT1400SPBES	Up to 1400mm	£1,647.00	£1,976.40
EPIT1600SPBES	Up to 1600mm	£1,782.00	£2,138.40

For Matki Measure and Installation Service see page 47.



OPTIONS

HANDING	DOOR OPENING
Left Hand - LH	Right Hand - RH
	Outwards (Standard) Inwards - INW

HANDLES
Linear - LNR (Standard)
Traditional - TRAD
Ⓢ Illustrious - IST
Ⓢ Engineer - ENG (Add £110 ex VAT)

FRAME FINISHES	£ EX. VAT	£ INC. VAT
Sliver/Chrome - SC (Standard)	-	-
Matt Black - MB	£421.00	£505.20
Ⓢ Polished Chrome - CP	£1,036.00	£1,243.20
Ⓢ Living Brass - LB*	£874.00	£1,048.80
Ⓢ Polished Nickel - NP / Brushed Brass - BB*	£1,274.00	£1,528.80
Ⓢ Brushed Nickel - NB / Living Copper - LC*	£1,441.00	£1,729.20
Ⓢ Polished Gold - MG	£1,460.00	£1,752.00
Ⓢ Brushed Gold - GB / Dark Bronze - DB*	£1,635.00	£1,962.00
Aged Brass - AB*		

\* Living finishes please see page 43.

BESPOKE – VISIT OUR ONLINE PRICING TOOL
<a href="http://www.matki.co.uk/epit">www.matki.co.uk/epit</a>
Bespoke (BES) - heights, widths, frame types, shaping and glass finishes

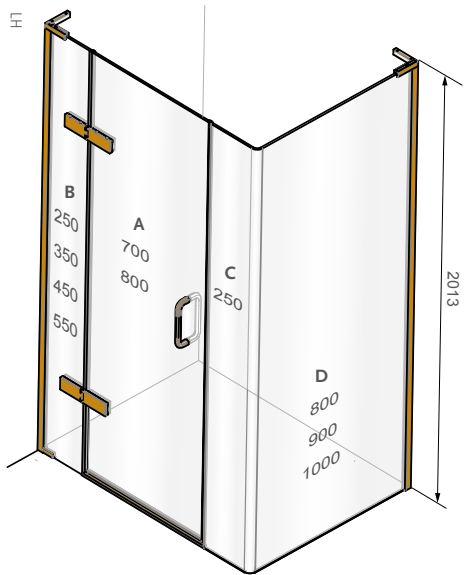
62. EHCL: HINGED DOOR WITH HINGE PANEL AND RADIUS 20 PANEL FOR CORNER

HOW TO ORDER

- Select CORNER DOOR and SIDE PANEL models from tables below
- Alternative standard door and panel combinations are available at the same price for each model size. The drawing opposite shows the standard panel sizes available
- Make choices from OPTIONS table, adding suffix codes to EHCL CORNER DOOR code and surcharges to CORNER DOOR price; standard options will be supplied unless otherwise specified
- Small grip marks from the curving process may be visible on the curved glass. Please view displays

DIMENSIONS (MM)					PRICES	
CORNER DOOR	A+B+C	A	B	C	£ EX. VAT	£ INC. VAT
EHCL1200	1167 – 1182	700	250	250	£2,098.00	£2,517.60
EHCL1300	1267 – 1282	700	350	250	£2,119.00	£2,542.80
EHCL1400	1367 – 1382	700	450	250	£2,173.00	£2,607.60
EHCL1500	1467 – 1482	700	550	250	£2,209.00	£2,650.80
EHCL1600	1567 – 1582	800	550	250	£2,244.00	£2,692.80
SIDE PANEL	D	£ EX. VAT		£ INC. VAT		
EWL800SP	770 – 785	£1,863.00		£2,235.60		
EWL900SP	870 – 885	£1,939.00		£2,326.80		
EWL1000SP	970 – 985	£1,976.00		£2,371.20		

For Matki Measure and Installation Service see page 47.



OPTIONS

HANDING	DOOR OPENING
Left Hand Corner - LH    Right Hand Corner - RH	Outwards (Standard)

HANDLES
Linear - LNR (Standard)    Traditional - TRAD
Ⓢ Illustrious - IST    Ⓢ Engineer - ENG (Add £110 ex VAT)

FRAME ACCENTS	£ EX. VAT	£ INC. VAT
None (Standard)	-	-
EHCL Frame Accent Pack - FVP*	£667.00	£800.40

\*Only available in Ⓢ finishes.

FRAME FINISHES	£ EX. VAT	£ INC. VAT
Sliver/Chrome - SC (Standard)	-	-
Matt Black - MB	£256.00	£307.20
Ⓢ Polished Chrome - CP	£647.00	£776.40
Ⓢ Living Brass - LB*	£518.00	£621.60
Ⓢ Polished Nickel - NP / Brushed Brass - BB*	£897.00	£1,076.40
Ⓢ Brushed Nickel - NB / Living Copper - LC*	£1,070.00	£1,284.00
Ⓢ Polished Gold - MG	£1,099.00	£1,318.80
Ⓢ Brushed Gold - GB / Dark Bronze - DB*	£1,293.00	£1,551.60
Aged Brass - AB*		

\* Living finishes please see page 43.

BESPOKE – VISIT OUR ONLINE PRICING TOOL
<a href="http://www.matki.co.uk/ehcl">www.matki.co.uk/ehcl</a>
Bespoke (BES) – widths and shaping to hinge panel and door only

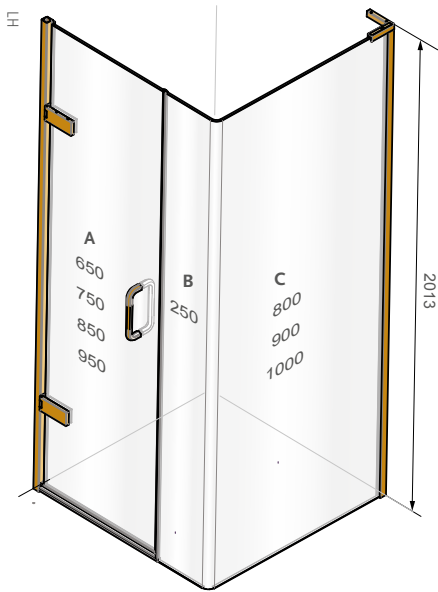


HOW TO ORDER

- Select CORNER DOOR and SIDE PANEL Models from tables below
- Alternative standard door and panel combinations are available at the same price for each model size. The drawing opposite shows the standard panel sizes available
- Make choices from OPTIONS table, adding suffix codes to EWCL CORNER DOOR code and surcharges to CORNER DOOR price; standard options will be supplied unless otherwise specified
- Small grip marks from the curving process may be visible on the curved glass. Please view displays

DIMENSIONS (MM)				PRICES	
CORNER DOOR	A+B	A	B	£ EX. VAT	£ INC. VAT
EWCL900	873 – 888	650	250	£1,812.00	£2,174.40
EWCL1000	973 – 988	750	250	£1,832.00	£2,198.40
EWCL1100	1073 – 1088	850	250	£1,860.00	£2,232.00
EWCL1200	1173 – 1188	950	250	£1,907.00	£2,288.40
SIDE PANEL	C			£ EX. VAT	£ INC. VAT
EWL800SP	770 – 785			£1,863.00	£2,235.60
EWL900SP	870 – 885			£1,939.00	£2,326.80
EWL1000SP	970 – 985			£1,976.00	£2,371.20

For Matki Measure and Installation Service see page 47.



OPTIONS

HANDING

Left Hand Corner – LH    Right Hand Corner – RH

DOOR OPENING

Outwards (Standard)

HANDLES

Linear – LNR (Standard)

Traditional – TRAD

Illustrious – IST

Engineer – ENG (Add £110 ex VAT)

FRAME ACCENTS

None (Standard)

EWCL Frame Accent Pack – FVP\*

£ EX. VAT

-

£356.00

£ INC. VAT

-

£427.20

\*Only available in finishes.

FRAME FINISHES

Sliver/Chrome – SC (Standard)

Matt Black – MB

Polished Chrome – CP

Living Brass – LB\*

Polished Nickel – NP / Brushed Brass – BB\*

Brushed Nickel – NB / Living Copper – LC\*

Polished Gold – MG

Brushed Gold – GB / Dark Bronze – DB\*

Aged Brass – AB\*

£ EX. VAT

-

£421.00

£1,036.00

£874.00

£1,274.00

£1,441.00

£1,460.00

£1,635.00

£ INC. VAT

-

£505.20

£1,243.20

£1,048.80

£1,528.80

£1,729.20

£1,752.00

£1,962.00

\* Living finishes please see page 43.

BESPOKE – VISIT OUR ONLINE PRICING TOOL

[www.matki.co.uk/ewcl](http://www.matki.co.uk/ewcl)

Bespoke (BES) – widths to door only

64. EPQ: QUINTESSE DESIGN WITH HINGED DOOR

AVAILABLE FROM JULY 2025 – FOR CURRENT MODEL SEE WEBSITE [WWW.MATKI.CO.UK/EPQ](http://WWW.MATKI.CO.UK/EPQ)

HOW TO ORDER

- Select QUINTESSE model from table below
- Make choices from OPTIONS table, adding suffix codes to EPQ QUINTESSE code and surcharges to price; standard options will be supplied unless otherwise specified

EPQ – EQUAL SIDES

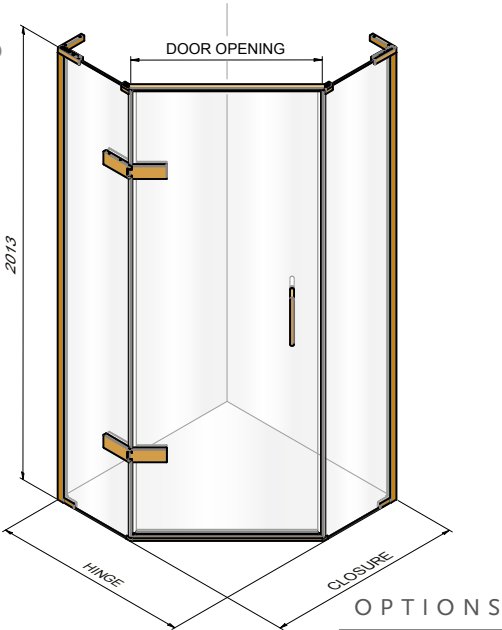
DIMENSIONS (MM)			PRICES		
EQUAL	HINGE SIDE	CLOSURE SIDE	DOOR OPENING	£ EX. VAT	£ INC. VAT
EPQ900*	870 - 885	870 - 885	685	£2,424.00	£2,908.80
EPQ1000*	970 - 985	970 - 985	685	£2,494.00	£2,992.80
EPQ1100	1070 - 1085	1070 - 1085	685	£2,618.00	£2,181.67
EPQ1200	1170 - 1185	1170 - 1185	685	£2,672.00	£2,226.67

EPQ – OFFSET – HINGED FROM SHORT PANEL

DIMENSIONS (MM)			PRICES		
OFFSET	HINGE SIDE	CLOSURE SIDE	DOOR OPENING	£ EX. VAT	£ INC. VAT
EPQ8090	770 - 785	870 - 885	543	£2,418.00	£2,901.60
EPQ8010*	770 - 785	970 - 985	543	£2,438.00	£2,925.60
EPQ8011	770 - 785	1070 - 1085	543	£2,528.00	£3,033.60
EPQ8012*	770 - 785	1170 - 1185	543	£2,539.00	£3,046.80
EPQ8013	770 - 785	1270 - 1285	543	£2,604.00	£3,124.80
EPQ8014	770 - 785	1370 - 1385	543	£2,639.00	£3,166.80
EPQ9010*	870 - 885	970 - 985	685	£2,461.00	£2,953.20
EPQ9011	870 - 885	1070 - 1085	685	£2,549.00	£3,058.80
EPQ9012*	870 - 885	1170 - 1185	685	£2,557.00	£3,068.40
EPQ9013	870 - 885	1270 - 1285	685	£2,609.00	£3,130.80
EPQ9014	870 - 885	1370 - 1385	685	£2,643.00	£3,171.60
EPQ9015*	870 - 885	1470 - 1485	685	£2,665.00	£3,198.00
EPQ1011	970 - 985	1070-1085	685	£2,567.00	£3,080.40
EPQ1012	970 - 985	1170 - 1185	685	£2,594.00	£3,112.80
EPQ1013	970 - 985	1270 - 1285	685	£2,626.00	£3,151.20
EPQ1014	970 - 985	1370 - 1385	685	£2,671.00	£3,205.20
EPQ1015	970 - 985	1470 - 1485	685	£2,702.00	£3,242.40

EPQ – OFFSET – HINGED FROM LONG PANEL

DIMENSIONS (MM)			PRICES		
OFFSET	HINGE SIDE	CLOSURE SIDE	DOOR OPENING	£ EX. VAT	£ INC. VAT
EPQ9080	870 - 885	770 - 785	543	£2,418.00	£2,901.60
EPQ1080*	970 - 985	770 - 785	543	£2,438.00	£2,925.60
EPQ1090*	970 - 985	870 - 885	685	£2,461.00	£2,953.20
EPQ1180	1070 - 1085	770 - 785	543	£2,528.00	£3,033.60
EPQ1190	1070 - 1085	870 - 885	685	£2,549.00	£3,058.80
EPQ1110	1070 - 1085	970 - 985	685	£2,567.00	£3,080.40
EPQ1280*	1170 - 1185	770 - 785	543	£2,539.00	£3,046.80
EPQ1290*	1170 - 1185	870 - 885	685	£2,557.00	£3,068.40
EPQ1210	1170 - 1185	970 - 985	685	£2,594.00	£3,112.80
EPQ1380	1170 - 1185	770 - 785	543	£2,604.00	£3,124.80
EPQ1390	1170 - 1185	870 - 885	685	£2,609.00	£3,130.80
EPQ1310	1170 - 1185	970 - 985	685	£2,626.00	£3,151.20

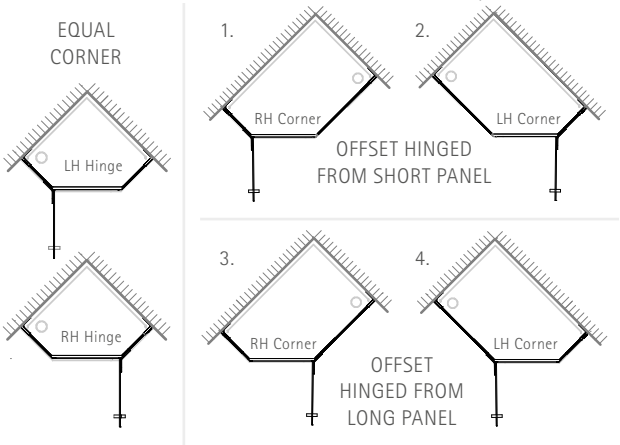


HANDING	DOOR OPENING	
Unhanded	Outwards (Standard)	
HANDLES		
Linear - LNR (Standard)	Traditional - TRAD	
(S) Illustrious - IST	(S) Engineer - ENG (Add £110 ex VAT)	
FRAME FINISHES	£ EX. VAT	£ INC. VAT
Sliver/Chrome - SC (Standard)	-	-
Matt Black - MB	£356.00	£427.20
(S) Polished Chrome - CP	£998.00	£1,197.60
(S) Living Brass - LB*	£870.00	£1,044.00
(S) Polished Nickel - NP / Brushed Brass - BB*	£1,253.00	£1,503.60
(S) Brushed Nickel - NB / Living Copper - LC*	£1,377.00	£1,652.40
(S) Polished Gold - MG	£1,401.00	£1,681.20
(S) Brushed Gold - GB / Dark Bronze - DB*	£1,596.00	£1,915.20
Aged Brass - AB*		

\* Living finishes please see page 43.

BESPOKE – VISIT OUR ONLINE PRICING TOOL
<a href="http://www.matki.co.uk/epq">www.matki.co.uk/epq</a>
Bespoke (BES) - heights, widths, frame types, shaping and glass finishes.

CONFIGURATIONS & HANDING





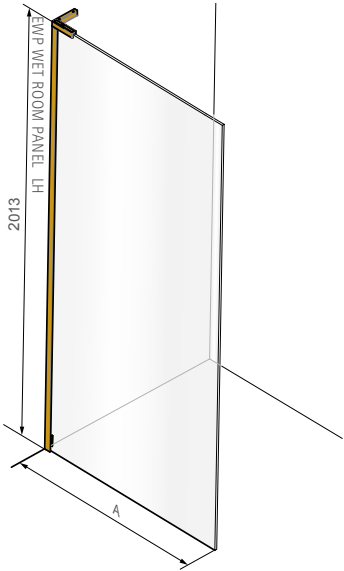
HOW TO ORDER

- Select Wet Room Panel Size
- Make choices from OPTIONS table, adding suffix codes to EWP code and surcharges to EWP price; standard options will be supplied unless otherwise specified

DIMENSIONS (MM)		PRICES	
EWP	A	£ EX. VAT	£ INC. VAT
EWP200	164 - 179	£519.00	£622.80
EWP300	264 - 279	£537.00	£644.40
EWP400	364 - 379	£560.00	£672.00
EWP500	464 - 479	£585.00	£702.00
EWP600	564 - 579	£635.00	£762.00
EWP700	664 - 679	£646.00	£775.20
EWP760	724 - 739	£663.00	£795.60
EWP800	764 - 779	£691.00	£829.20
EWP900*	864 - 879	£716.00	£859.20
EWP1000*	964 - 979	£729.00	£874.80
EWP1100*	1064 - 1079	£776.00	£931.20
EWP1200*	1164 - 1179	£782.00	£938.40
EWP1300 - add brace	1264 - 1279	£846.00	1,015.20
EWP1400 - add brace	1364 - 1379	£921.00	£1,105.20
EWP1500 - add brace	1464 - 1479	£995.00	£1,194.00

\* Available as standard with choice of Towel Rail (600mm centres), see page 80, please add RAIL to end of code.

For Matki Measure and Installation Service see page 47.



OPTIONS

HANDING
Left Hand - LH
Right Hand - RH

FRAME ACCENTS	£ EX. VAT	£ INC. VAT
None (Standard)	-	-
EWP Panel End Vertical - FVP*	£356.00	£427.20

\*Only available in (S) finishes below.

FRAME FINISHES	£ EX. VAT	£ INC. VAT
Sliver/Chrome - SC (Standard)	-	-
Matt Black - MB	£79.00	£94.80
(S) Polished Chrome - CP	£441.00	£529.20
(S) Living Brass - LB*	£323.00	£387.60
(S) Polished Nickel - NP / Brushed Brass - BB*	£515.00	£618.00
(S) Brushed Nickel - NB / Living Copper - LC*	£583.00	£699.60
(S) Polished Gold - MG	£596.00	£715.20
(S) Brushed Gold - GB / Dark Bronze - DB*	£647.00	£776.40
Aged Brass - AB*		

\* Living finishes please see page 43.

WALL BRACE	£ EX. VAT	£ INC. VAT
Sliver/Chrome - SC (Standard)	£109.00	£130.80
Matt Black - MB	£125.00	£150.00
(S) Polished Chrome - CP	£217.00	£260.40
(S) Living Brass - LB*	£208.00	£249.60
(S) Polished Nickel - NP / Brushed Brass - BB*	£222.00	£266.40
(S) Brushed Nickel - NB / Living Copper - LC*	£234.00	£280.80
(S) Polished Gold - MG	£247.00	£296.40
(S) Brushed Gold - GB / Dark Bronze - DB*	£255.00	£306.00
Aged Brass - AB*		

For (S) Finishes chose standard brace 765 - 905mm, or long brace 865 - 1005mm.

For brace bars longer than 1005mm or ceiling braces state type and width required and add a surcharge of £453 to prices.

BESPOKE – VISIT OUR ONLINE PRICING TOOL

[www.matki.co.uk/ewp](http://www.matki.co.uk/ewp)

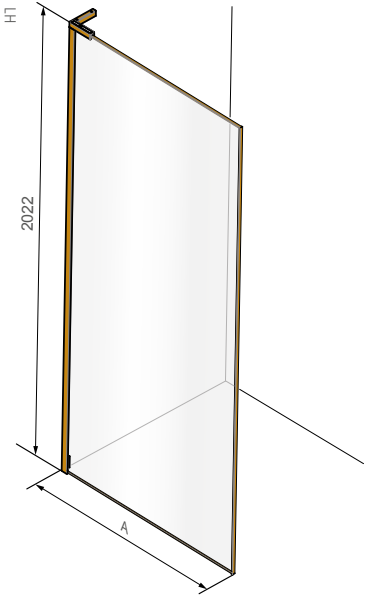
Bespoke (BES) - heights, widths, frame types, shaping and glass finishes

HOW TO ORDER

- Select Wet Room Panel Size
- Make choices from OPTIONS table, adding suffix codes to EWFP code and surcharges to EWFP price; standard options will be supplied unless otherwise specified

DIMENSIONS (MM)		PRICES	
EWFP	A	£ EX. VAT	£ INC. VAT
EWFP200	165 - 180	£1,149.00	£1,378.80
EWFP300	265 - 280	£1,198.00	£1,437.60
EWFP400	365 - 380	£1,248.00	£1,497.60
EWFP500	465 - 480	£1,298.00	£1,557.60
EWFP600	565 - 580	£1,348.00	£1,617.60
EWFP700	665 - 680	£1,399.00	£1,678.80
EWFP760	725 - 740	£1,429.00	£1,714.80
EWFP800	765 - 780	£1,448.00	£1,737.60
EWFP900*	865 - 880	£1,498.00	£1,797.60
EWFP1000*	965 - 980	£1,548.00	£1,857.60
EWFP1100*	1065 - 1080	£1,587.00	£1,904.40
EWFP1200*	1165 - 1180	£1,597.00	£1,916.40
EWFP1300 - Add brace	1265 - 1280	£1,770.00	£2,124.00
EWFP1400 - Add brace	1365 - 1380	£1,818.00	£2,181.60
EWFP1500 - Add brace	1465 - 1480	£1,865.00	£2,238.00

\*Available as standard with choice of Towel Rail (600mm centres), see page 80, please add RAIL to end of code.  
For brace bar prices and finishes see page 65.  
For Matki Measure and Installation Service see page 47.



OPTIONS

HANDING		
Left Hand - LH	Right Hand - RH	
FRAME FINISHES	£ EX. VAT	£ INC. VAT
Ⓢ Polished Chrome - CP (Standard)	-	-
Ⓢ Living Brass - LB*	-	-
Ⓢ Polished Nickel - NP / Brushed Brass - BB*	£160.00	£192.00
Ⓢ Brushed Nickel - NB / Living Copper - LC*	£267.00	£320.40
Ⓢ Polished Gold - MG	£278.00	£333.60
Ⓢ Brushed Gold - GB / Dark Bronze - DB*	£395.00	£474.00
Aged Brass - AB*		

\* Living finishes please see page 43.

BESPOKE – VISIT OUR ONLINE PRICING TOOL
<a href="http://www.matki.co.uk/ewfp">www.matki.co.uk/ewfp</a>
Bespoke (BES) - heights, widths and glass finishes



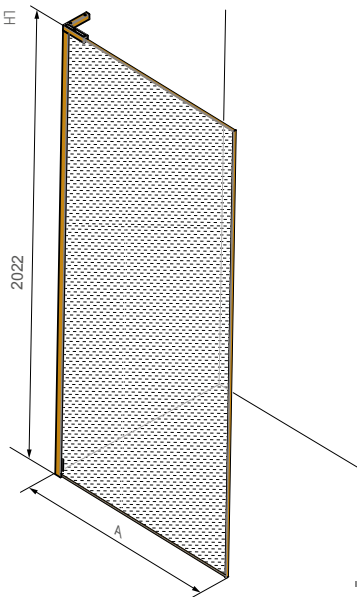
HOW TO ORDER

- Select Wet Room Panel Size
- Make choices from OPTIONS table, adding suffix codes to EWMP code and surcharges to EWMP price; standard options will be supplied unless otherwise specified

DIMENSIONS (MM)		PRICES	
EWMP - SM SILVER MESH	A	£ EX. VAT	£ INC. VAT
EWMP800SM	765 - 780	£3,753.00	£4,503.60
EWMP900SM	865 - 880	£4,076.00	£4,891.20
EWMP1000SM	965 - 980	£4,407.00	£5,288.40
EWMP1100SM	1065 - 1080	£4,737.00	£5,684.40
EWMP1200SM	1165 - 1180	£5,222.00	£6,266.40

DIMENSIONS (MM)		PRICES	
EWMP - GM GOLD MESH	A	£ EX. VAT	£ INC. VAT
EWMP800GM	765 - 780	£4,050.00	£4,860.00
EWMP900GM	865 - 880	£4,411.00	£5,293.20
EWMP1000GM	965 - 980	£4,782.00	£5,738.40
EWMP1100GM	1065 - 1080	£5,150.00	£6,180.00
EWMP1200GM	1165 - 1180	£5,668.00	£6,801.60

For Matki Measure and Installation Service see page 47.



OPTIONS

HANDING		
Left Hand - LH	Right Hand - RH	

FRAME FINISHES	£ EX. VAT	£ INC. VAT
Ⓢ Polished Chrome - CP (Standard)	-	-
Ⓢ Living Brass - LB*	-	-
Ⓢ Polished Nickel - NP / Brushed Brass - BB*	£160.00	£192.00
Ⓢ Brushed Nickel - NB / Living Copper - LC*	£267.00	£320.40
Ⓢ Polished Gold - MG	£278.00	£333.60
Ⓢ Brushed Gold - GB / Dark Bronze - DB*	£395.00	£474.00
Aged Brass - AB*		

\* Living finishes please see page 43.

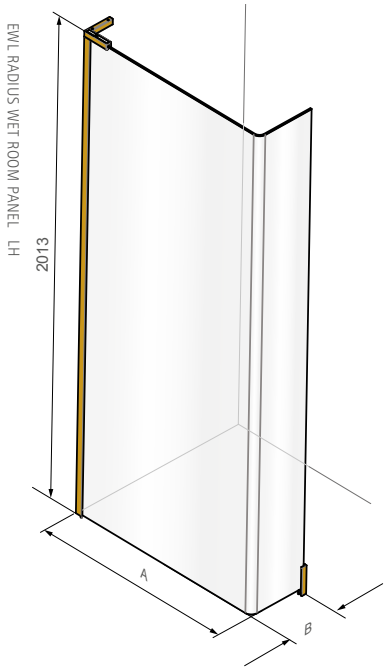
BESPOKE – VISIT OUR ONLINE PRICING TOOL	
<a href="http://www.matki.co.uk/ewmp">www.matki.co.uk/ewmp</a>	
Bespoke (BES) - heights and widths up to 1200mm	

HOW TO ORDER

- Select Wet Room Panel Size
- Make choices from OPTIONS table, adding suffix codes to EWL code and surcharges to EWL price; standard options will be supplied unless otherwise specified
- Small grip marks from the curving process may be visible on the glass. Please view displays

DIMENSIONS (MM)			PRICES	
EWL	A	B	£ EX. VAT	£ INC. VAT
EWL800	759 - 774	265	£1,923.00	£2,307.60
EWL900	868 - 883	275	£1,992.00	£2,390.40
EWL1000	970 - 985	275	£2,077.00	£2,492.40

For Matki Measure and Installation Service see page 47.



OPTIONS

HANDING		
Left Hand - LH		Right Hand - RH
FRAME FINISHES		
	£ EX. VAT	£ INC. VAT
Sliver/Chrome - SC (Standard)	-	-
Matt Black - MB	£206.00	£247.20
Ⓢ Polished Chrome - CP	£467.00	£560.40
Ⓢ Living Brass - LB*	£335.00	£402.00
Ⓢ Polished Nickel - NP / Brushed Brass - BB*	£545.00	£654.00
Ⓢ Brushed Nickel - NB / Living Copper - LC*	£622.00	£746.40
Ⓢ Polished Gold - MG	£638.00	£765.60
Ⓢ Brushed Gold - GB / Dark Bronze - DB*	£694.00	£832.80
Aged Brass - AB*		

\* Living finishes please see page 43.



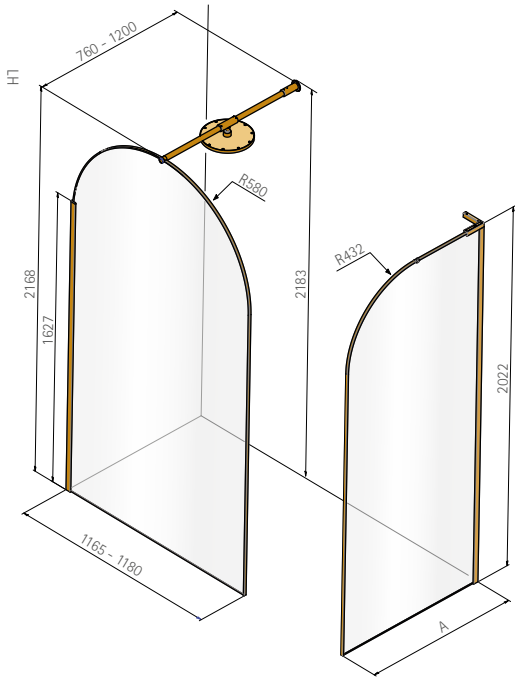
HOW TO ORDER

- Select Arch Panel size
- Select Side Panel size (if required)
- Make choices from OPTIONS table adding suffix codes and surcharges where applicable
- Please note the Shower Brace includes one first fix item
- Glass supplied in ultra clear Low Iron as standard
- Available as Twin Entrance Panel at same pricing. Please use code EWAT1200. Width 1165mm

DIMENSIONS (MM)		PRICES	
EWAP		£ EX. VAT	£ INC. VAT
ARCH PANEL			
EWAP1200		£2,650.00	£3,180.00

DIMENSIONS (MM)		PRICES	
EWAP - SP			
SIDE PANEL	A	£ EX. VAT	£ INC. VAT
EWAP800SP	765 - 780	£1,815.00	£2,178.00
EWAP900SP	865 - 880	£1,838.00	£2,205.60

For Matki Measure and Installation Service see page 47. Measure and Installation does not include first fix brassware elements.



OPTIONS

HANDING - for models with side panel only

Left Hand - LH Right Hand - RH

FRAME FINISHES	EWAP1200		SIDE PANEL	
	£ EX.VAT	£ INC.VAT	£ EX.VAT	£ INC.VAT
Ⓢ Polished Chrome - CP (Standard)	-	-	-	-
Ⓢ Living Brass - LB*	-	-	-	-
Ⓢ Polished Nickel - NP / Brushed Brass - BB*	£197.00	£236.40	£160.00	£192.00
Ⓢ Brushed Nickel - NB / Living Copper - LC*	£298.00	£357.60	£267.00	£320.40
Ⓢ Polished Gold - MG	£361.00	£433.20	£278.00	£333.60
Ⓢ Brushed Gold - GB / Dark Bronze - DB*	£491.00	£589.20	£395.00	£474.00
Aged Brass - AB*				

\* Living finishes please see page 43.

DELUGE - please add suffix "D" where deluge required	£ EX. VAT	£ INC. VAT
Without Deluge (Standard)	-	-
With Deluge - D	£208.00	£249.60
With Wall Brace instead of Shower Brace - WB	- £402.00	- £482.40

For Wall Brace see page 81 and note adjustment ranges for Long and Short versions.

BESPOKE - VISIT OUR ONLINE PRICING TOOL	
<a href="http://www.matki.co.uk/ewap">www.matki.co.uk/ewap</a>	
Bespoke (BES) - Glass finishes	
<a href="http://www.matki.co.uk/ewapsp">www.matki.co.uk/ewapsp</a>	
Bespoke (BES) - heights, widths and glass finishes	

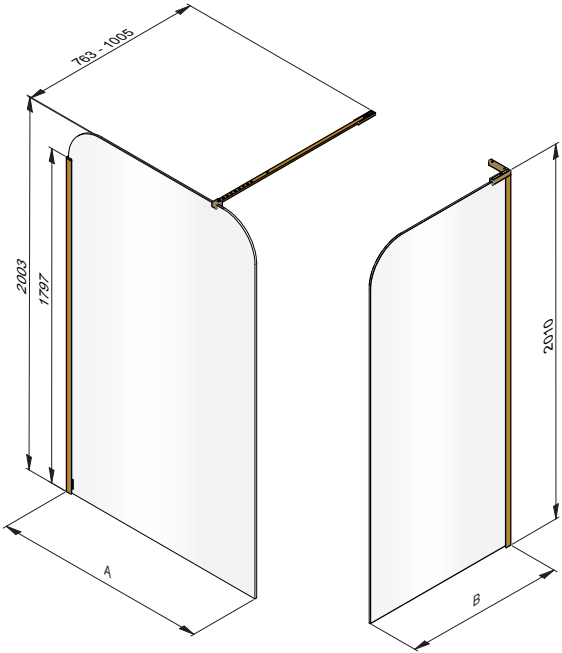
HOW TO ORDER

- Select Wet Room Panel Size
- Make choices from OPTIONS table, adding suffix codes to EWDP code and surcharges to EWDP price; standard options will be supplied unless otherwise specified

DIMENSIONS (MM)		PRICES	
EWDP	A	£ EX. VAT	£ INC. VAT
DOME PANEL			
EWDP1000	964 - 979	£908.00	£1,089.60
EWDP1200	1164 - 1179	£921.00	£1,105.20
EWDP1500	1464 - 1479	£1,082.00	£1,298.40

DIMENSIONS (MM)		PRICES	
EWDP - SP	B	£ EX. VAT	£ INC. VAT
SIDE PANEL			
EWDP800SP	764 - 779	£691.00	£829.20
EWDP900SP	864 - 879	£716.00	£859.20

For Matki Measure and Installation Service see page 47.



OPTIONS

FRAME FINISHES	EWDP		SIDE PANEL	
	£ EX.VAT	£ INC.VAT	£ EX.VAT	£ INC.VAT
Silver/Chrome - SC (Standard)	-	-	-	-
Matt Black - MB	£79.00	£94.80	£79.00	£94.80
Ⓢ Polished Chrome - CP	£441.00	£529.20	£441.00	£529.20
Ⓢ Living Brass - LB*	£323.00	£387.60	£323.00	£387.60
Ⓢ Polished Nickel - NP / Brushed Brass - BB*	£515.00	£618.00	£515.00	£618.00
Ⓢ Brushed Nickel - NB / Living Copper - LC*	£583.00	£699.60	£583.00	£699.60
Ⓢ Polished Gold - MG	£596.00	£715.20	£596.00	£715.20
Ⓢ Brushed Gold - GB / Dark Bronze - DB*	£647.00	£776.40	£647.00	£776.40
Aged Brass - AB*				

\* Living finishes please see page 43.

GLASS FINISHES - for Standard Models	EWDP		SIDE PANEL	
	£ EX.VAT	£ INC.VAT	£ EX.VAT	£ INC.VAT
Ultra Clear Low Iron (Standard)	-	-	-	-
Ultra Clear Fluted - Ⓢ finishes only	£700.00	£840.00	£470.00	£564.00

BESPOKE – VISIT OUR ONLINE PRICING TOOL

[www.matki.co.uk/ewdp](http://www.matki.co.uk/ewdp)

Bespoke (BES) - heights, widths and glass finishes

[www.matki.co.uk/ewdpsp](http://www.matki.co.uk/ewdpsp)

Bespoke (BES) - heights, widths and glass finishes



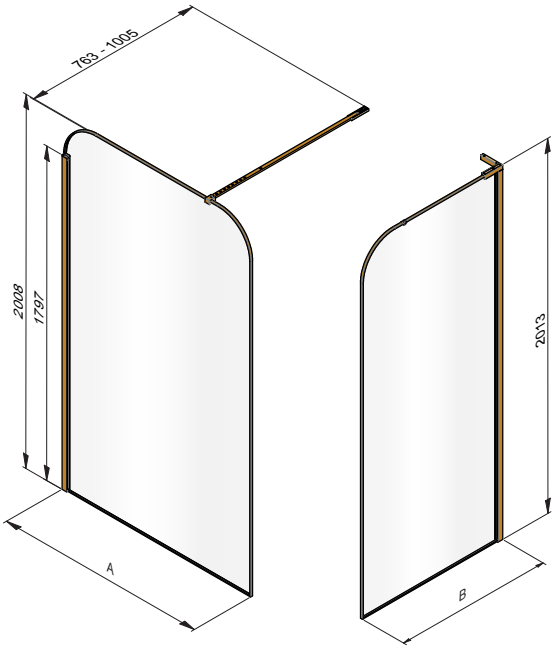
HOW TO ORDER

- Select Wet Room Panel Size
- Make choices from OPTIONS table, adding suffix codes to EFDP code and surcharges to EFDP price; standard options will be supplied unless otherwise specified

DIMENSIONS (MM)		PRICES	
EFDP	A	£ EX. VAT	£ INC. VAT
DOME PANEL			
EFDP1000	966 - 980	£2,263.00	£2,715.60
EFDP1200	1166 - 1180	£2,524.00	£3,028.80
EFDP1500	1466 - 1480	£2,752.00	£3,302.40

DIMENSIONS (MM)		PRICES	
EFDP - SP	B	£ EX. VAT	£ INC. VAT
SIDE PANEL			
EFDP800SP	766 - 780	£1,815.00	£2,178.00
EFDP900SP	866 - 880	£1,838.00	£2,205.60

For Matki Measure and Installation Service see page 47.



OPTIONS

FRAME FINISHES	EFDP		SIDE PANEL	
	£ EX.VAT	£ INC.VAT	£ EX.VAT	£ INC.VAT
Ⓢ Polished Chrome - CP (Standard)	-	-	-	-
Ⓢ Living Brass - LB*	-	-	-	-
Ⓢ Polished Nickel - NP / Brushed Brass - BB*	£197.00	£236.40	£160.00	£192.00
Ⓢ Brushed Nickel - NB / Living Copper - LC*	£298.00	£357.60	£267.00	£320.40
Ⓢ Polished Gold - MG	£361.00	£433.20	£278.00	£333.60
Ⓢ Brushed Gold - GB / Dark Bronze - DB*	£491.00	£589.20	£395.00	£474.00
Aged Brass - AB*				

\* Living finishes please see page 43.

GLASS FINISHES - for Standard Models	EFDP		SIDE PANEL	
	£ EX.VAT	£ INC.VAT	£ EX.VAT	£ INC.VAT
Ultra Clear Low Iron	-	-	-	-
Ultra Clear Fluted - Fluted	£700.00	£840.00	£470.00	£564.00

BESPOKE – VISIT OUR ONLINE PRICING TOOL	
<a href="http://www.matki.co.uk/efdp">www.matki.co.uk/efdp</a>	
Bespoke (BES) – heights, widths and glass finishes	
<a href="http://www.matki.co.uk/efdpdp">www.matki.co.uk/efdpdp</a>	
Bespoke (BES) – heights, widths and glass finishes	

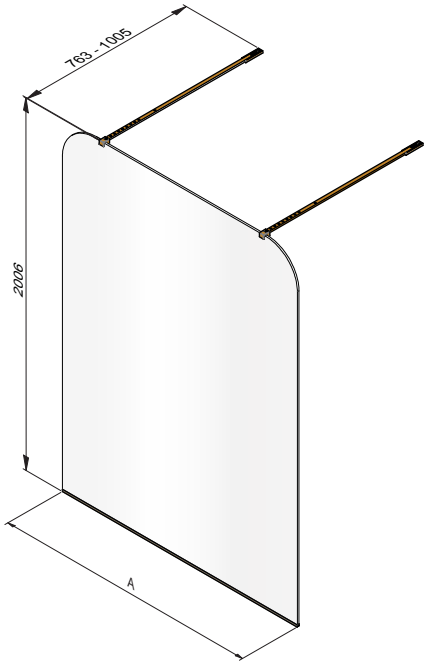
72. EWDT - DOME TWIN ENTRANCE WET ROOM PANEL

HOW TO ORDER

- Select Wet Room Panel Size
- Make choices from OPTIONS table, adding suffix codes to EWDT code and surcharges to EWDT price; standard options will be supplied unless otherwise specified

DIMENSIONS (MM)		PRICES	
EWDT	A	£ EX. VAT	£ INC. VAT
EWDT1200	1157	£849.00	£1,018.80
EWDT1500	1457	£1,040.00	£1,248.00

For Matki Measure and Installation Service see page 47.



OPTIONS

FRAME FINISHES	EWDT	
	£ EX.VAT	£ INC.VAT
Silver/Chrome - SC (Standard)	-	-
Matt Black - MB	£133.00	£159.60
(S) Polished Chrome - CP	£525.00	£630.00
(S) Living Brass - LB*	£405.00	£486.00
(S) Polished Nickel - NP / Brushed Brass - BB*	£660.00	£792.00
(S) Brushed Nickel - NB / Living Copper - LC*	£727.00	£872.40
(S) Polished Gold - MG	£737.00	£884.40
(S) Brushed Gold - GB / Dark Bronze - DB*	£808.00	£969.60
Aged Brass - AB*		

\* Living finishes please see page 43.

GLASS FINISHES - for Standard Models	EWDT	
	£ EX.VAT	£ INC.VAT
Ultra Clear Low Iron	-	-
Ultra Clear Low Iron - Fluted	£700.00	£840.00

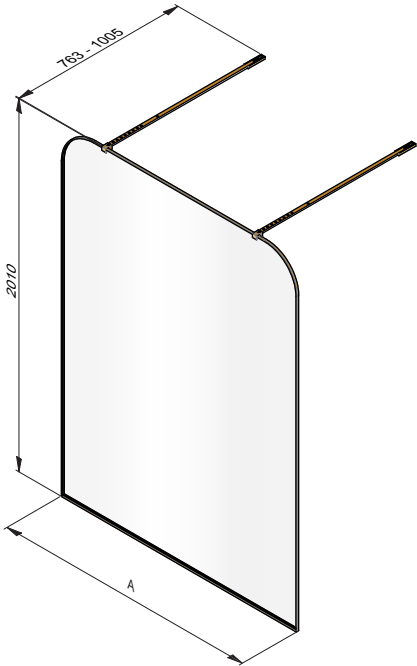
BESPOKE – VISIT OUR ONLINE PRICING TOOL
<a href="http://www.matki.co.uk/ewdt">www.matki.co.uk/ewdt</a>
Bespoke (BES) – heights, widths and glass finishes

HOW TO ORDER

- Select Wet Room Panel Size
- Make choices from OPTIONS table, adding suffix codes to EFDT code and surcharges to EFDT price; standard options will be supplied unless otherwise specified

DIMENSIONS (MM)		PRICES	
EFDT	A	£ EX. VAT	£ INC. VAT
EFDT1200	1160	£2,060.00	£2,472.00
EFDT1500	1460	£2,251.00	£2,701.20

For Matki Measure and Installation Service see page 47.



OPTIONS

FRAME FINISHES	EFDT	
	£ EX.VAT	£ INC.VAT
Ⓢ Polished Chrome - CP	-	-
Ⓢ Living Brass - LB*	-	-
Ⓢ Polished Nickel - NP / Brushed Brass - BB*	£135.00	£162.00
Ⓢ Brushed Nickel - NB / Living Copper - LC*	£382.00	£458.40
Ⓢ Polished Gold - MG	£419.00	£502.80
Ⓢ Brushed Gold - GB /Dark Bronze - DB*	£575.00	£690.00
Aged Brass - AB*		

\* Living finishes please see page 43.

GLASS FINISHES - for Standard Models	EFDT	
	£ EX.VAT	£ INC.VAT
Ultra Clear Low Iron	-	-
Ultra Clear Low Iron - Fluted	£700.00	£840.00

BESPOKE – VISIT OUR ONLINE PRICING TOOL	
<a href="http://www.matki.co.uk/efdt">www.matki.co.uk/efdt</a>	
Bespoke (BES) - heights, widths and glass finishes	



74. EWPH - WET ROOM PANEL WITH HINGE PANEL

HOW TO ORDER

- Select FIXED PANEL and HINGE PANEL sizes
- Make choices from OPTIONS table, adding suffix codes to EWPH and EWPH-HP code and surcharges to prices; standard options will be supplied unless otherwise specified

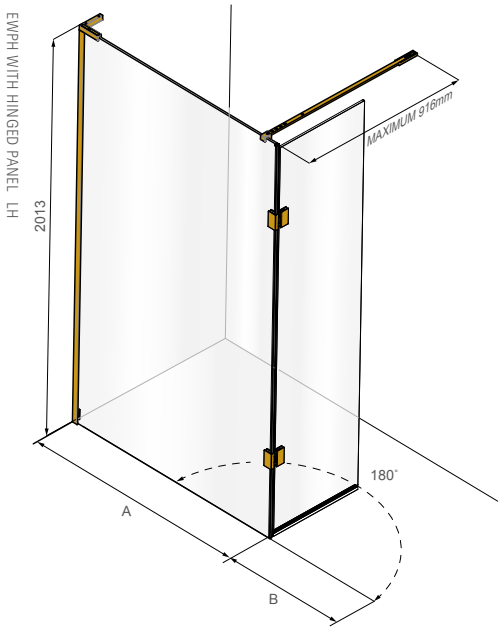
DIMENSIONS (MM)		PRICES	
FIXED PANEL	A	£ EX. VAT	£ INC. VAT
EWPH725FP	687 – 702	£1,163.00	£1,395.60
EWPH950FP	907 – 922	£1,247.00	£1,496.40
EWPH1100FP	1057 – 1072	£1,328.00	£1,593.60

DIMENSIONS (MM)		PRICES	
HINGE PANEL	B	£ EX. VAT	£ INC. VAT
EWPH300HP	300	£376.00	£451.20
EWPH440HP	440	£384.00	£460.80
EWPH490HP	490	£399.00	£478.80

Fixed Panel and Hinge Panel are delivered pre-assembled.

All EWPH models and come with a wall brace bar. For brace bars in (S) marked finishes, please choose from STANDARD 765 – 905mm and LONG 865 – 1005mm. For bespoke w(S)braces longer than 1005mm state width required and add a surcharge of £453 ex VAT.

For Matki Measure and Installation Service see page 47.



OPTIONS

HANDING		PANEL OPENING	
Left Hand - LH	Right Hand - RH	Inwards (Standard)	Outwards - OTW

WALL FRAME TYPES
Standard Frame
Medium Frame - MED*

\*Reduces adjustment range A max dimension by 5mm.

FRAME FINISHES	£ EX. VAT	£ INC. VAT
Sliver/Chrome - SC (Standard)	-	-
Matt Black - MB	£541.00	£649.20
(S) Polished Chrome - CP	£460.00	£552.00
(S) Living Brass - LB*	£378.00	£453.60
(S) Polished Nickel - NP / Brushed Brass - BB*	£597.00	£716.40
(S) Brushed Nickel - NB / Living Copper - LC*	£692.00	£830.40
(S) Polished Gold - MG	£708.00	£849.60
(S) Brushed Gold - GB / Dark Bronze - DB*	£811.00	£973.20
Aged Brass- AB*		

\* Living finishes please see page 43.

BESPOKE – VISIT OUR ONLINE PRICING TOOL
<a href="http://www.matki.co.uk/ewph">www.matki.co.uk/ewph</a>
Bespoke (BES) - heights, widths, frame types, shaping and glass finishes

HOW TO ORDER

- Select TWIN ENTRANCE Wet Room Panel model size
- Make choices from OPTIONS table, adding suffix codes to AST code and surcharges to AST price; standard options will be supplied unless otherwise specified

DIMENSIONS (MM)		PRICES	
TWIN ENTRANCE	A	£ EX. VAT	£ INC. VAT
AST1000	950	£916.00	£1,099.20
AST1200	1150	£991.00	£1,189.20
AST1500	1450	£1,260.00	£1,512.00

For Matki Measure and Installation Service see page 47.



OPTIONS

FRAME FINISHES	£ EX. VAT	£ INC. VAT
Sliver/Chrome - SC (Standard)	-	-
Matt Black - MB	£206.00	£247.20
(S) Living Brass - LB*	£90.00	£108.00
(S) Polished Nickel - NP / Brushed Brass - BB*	£99.00	£118.80
(S) Brushed Nickel - NB / Living Copper - LC*	£150.00	£180.00
(S) Polished Gold - MG	£164.00	£196.80
(S) Brushed Gold - GB / Dark Bronze - DB*	£193.00	£231.60
Aged Brass- AB*		

\* Living finishes please see page 43.

BESPOKE – VISIT OUR ONLINE PRICING TOOL

[www.matki.co.uk/ast](http://www.matki.co.uk/ast)

Bespoke (BES) - heights, widths, shaping and glass finishes

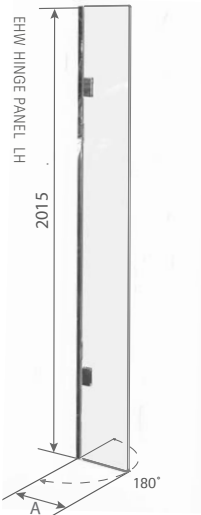
76. EHW: HINGE PANEL

HOW TO ORDER

Order with EWP Wet Room Panel - page 61 or to retrofit onto existing wet room panel to provide extra splash protection

DIMENSIONS (MM)		PRICES	
HINGE PANEL	A	£ EX. VAT	£ INC. VAT
EHW300HP	313	£565.00	£678.00

Always requires Brace Bar fitted to fixed panel, see page 65 for pricing.  
For Matki Measure and Installation Service see page 47.



OPTIONS

HINGE PANEL OPENING

Inwards and Outwards through 180° (Standard)

FRAME FINISHES	£ EX. VAT	£ INC. VAT
Sliver/Chrome - SC (Standard)	-	-

BESPOKE – VISIT OUR ONLINE PRICING TOOL
<a href="http://www.matki.co.uk/ehw">www.matki.co.uk/ehw</a>
Bespoke (BES) - heights and glass finishes

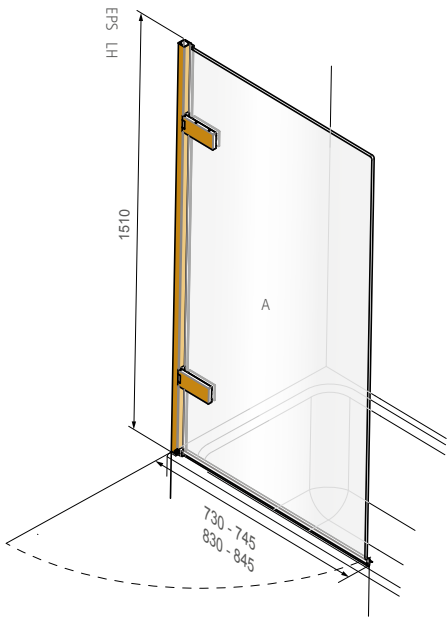


HOW TO ORDER

- Select Model from table below
- Make choices from OPTIONS table, adding suffix codes to EPS code and surcharges to EPS price; standard options will be supplied unless otherwise specified

DIMENSIONS (MM)		PRICES	
MODEL	A	£ EX. VAT	£ INC. VAT
EPS700	730 – 745	£820.00	£984.00
EPS800	830 – 845	£896.00	£1,075.20

For Matki Measure and Installation Service see page 47.



OPTIONS

HANDING		PANEL OPENING
Left Hand - LH	Right Hand - RH	Outwards (Standard)

FRAME FINISHES	£ EX. VAT	£ INC. VAT
Sliver/Chrome - SC (Standard)	-	-
Matt Black - MB	£160.00	£192.00
Ⓢ Polished Chrome - CP	£777.00	£932.40
Ⓢ Living Brass - LB*	£744.00	£892.80
Ⓢ Polished Nickel - NP / Brushed Brass - BB*	£841.00	£1,009.20
Ⓢ Brushed Nickel - NB / Living Copper - LC*	£894.00	£1,072.80
Ⓢ Polished Gold - MG	£949.00	£1,138.80
Ⓢ Brushed Gold - GB / Dark Bronze - DB*	£980.00	£1,176.00
Aged Brass - AB*		

\* Living finishes please see page 43.

BESPOKE – VISIT OUR ONLINE PRICING TOOL
<a href="http://www.matki.co.uk/eps">www.matki.co.uk/eps</a>
Bespoke (BES) - heights, widths, frame types, shaping and glass finishes

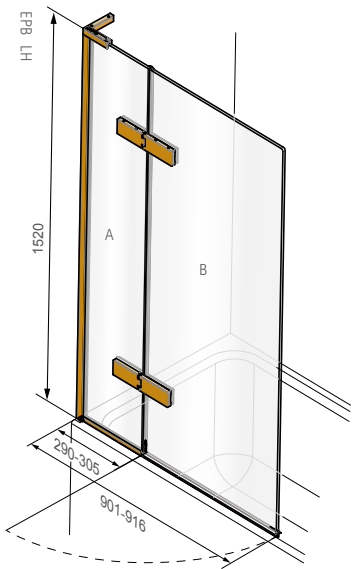
78. EPB - TWO PANEL BATH SCREEN

HOW TO ORDER

- Select Model from table below
- Make choices from OPTIONS table, adding suffix codes to EPB code and surcharges to EPB price; standard options will be supplied unless otherwise specified

DIMENSIONS (MM)			PRICES	
MODEL	A	B	£ EX. VAT	£ INC. VAT
EPB900	290 – 305	611	£1,096.00	£1,315.20

For Matki Measure and Installation Service see page 47.



OPTIONS

HANDING		PANEL OPENING	
Left Hand - LH	Right Hand - RH	Outwards (Standard)	Inwards - INW

FRAME FINISHES	£ EX. VAT	£ INC. VAT
Silver/Chrome - SC (Standard)	-	-
Matt Black - MB	£126.00	£151.20
Ⓢ Polished Chrome - CP	£323.00	£387.60
Ⓢ Living Brass - LB*	£313.00	£375.60
Ⓢ Polished Nickel - NP / Brushed Brass - BB*	£389.00	£466.80
Ⓢ Brushed Nickel - NB / Living Copper - LC*	£499.00	£598.80
Ⓢ Polished Gold - MG	£591.00	£709.20
Ⓢ Brushed Gold - GB / Dark Bronze - DB*	£645.00	£774.00
Aged Brass - AB*		

\* Living finishes please see page 43.

BESPOKE – VISIT OUR ONLINE PRICING TOOL

[www.matki.co.uk/epb](http://www.matki.co.uk/epb)

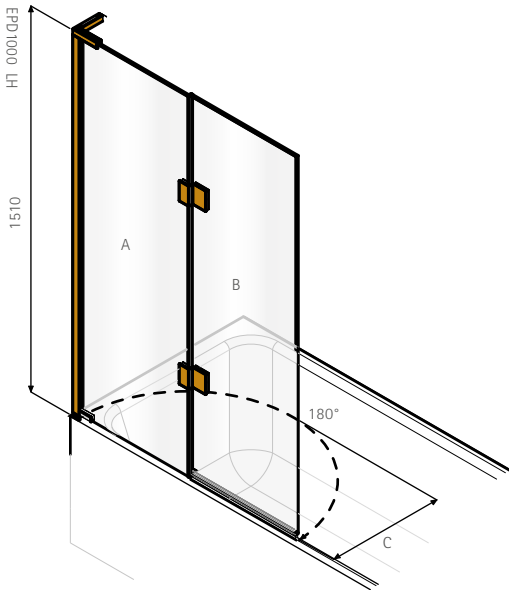
Bespoke (BES) – heights, widths, frame types, shaping and glass finishes

HOW TO ORDER

- Select model from table below
- Make choices from OPTIONS table, adding suffix codes to EPD code and surcharges to EPD price; standard options will be supplied unless otherwise specified

DIMENSIONS (MM)				PRICES		
MODEL	A+B	A	B	C	£ EX. VAT	£ INC. VAT
EPD900	942 - 957	252	690	723	£940.00	£1,128.00
EPD907	942 - 957	332	610	643	£940.00	£1,128.00
EPD1000	995 - 1010	525	470	504	£961.00	£1,153.20

For Matki Measure and Installation Service see page 47.



OPTIONS

HANDING		PANEL OPENING	
Left Hand - LH	Right Hand - RH	Inwards (Standard)	Outwards - OTW
FRAME FINISHES		£ EX. VAT	£ INC. VAT
Sliver/Chrome - SC (Standard)		-	-
Matt Black - MB		£525.00	£630.00
Ⓢ Polished Chrome - CP		£323.00	£387.60
Ⓢ Living Brass - LB*		£282.00	£338.40
Ⓢ Polished Nickel - NP / Brushed Brass - BB*		£389.00	£466.80
Ⓢ Brushed Nickel - NB / Living Copper - LC*		£499.00	£598.80
Ⓢ Polished Gold - MG		£591.00	£709.20
Ⓢ Brushed Gold - GB / Dark Bronze - DB*		£645.00	£774.00
Aged Brass- AB*			

\* Living finishes please see page 43.

BESPOKE – VISIT OUR ONLINE PRICING TOOL

[www.matki.co.uk/epd](http://www.matki.co.uk/epd)

Bespoke (BES) - heights, widths, frame types, shaping and glass finishes



80. ACCESSORIES

LINEAR WALL TOWEL RAIL

		£ EX. VAT	£ INC. VAT
WLTR450	450mm centres	£221.00	£265.20
WLTR600	600mm centres	£243.00	£291.60

TRADITIONAL WALL TOWEL RAIL

		£ EX. VAT	£ INC. VAT
WTTR450	450mm centres	£221.00	£265.20
WTTR600	600mm centres	£243.00	£291.60

LINEAR PANEL TOWEL RAIL

		£ EX. VAT	£ INC. VAT
LTR450	450mm centres	£195.00	££234.00
LTR600	600mm centres	£258.00	£309.60
LTR450D*	450mm centres	£214.00	£256.80
LTR600D*	600mm centres	£324.00	£388.80

\*With door pull for inside of glass  
Bespoke glass required excluding select EWP and EWFP sizes, see pages 65 & 66

TRADITIONAL PANEL TOWEL RAIL

		£ EX. VAT	£ INC. VAT
TTR450	450mm centres	£195.00	£234.00
TTR600	600mm centres	£258.00	£309.60
TTRDS450	450mm centres	£453.00	£543.60
TTRDS600	600mm centres	£453.00	£543.60
TTR450D	450mm centres	£214.00	£256.80
TTR600D	600mm centres	£324.00	£388.80

TTR is single sided  
Bespoke glass required excluding select EWP and EWFP sizes, see pages 65 & 65

FINISH SURCHARGES - TOWEL RAILS

	£ EX. VAT	£ INC. VAT
Ⓢ Polished Chrome - CP (Standard)	-	-
Ⓢ Polished Nickel - NP / Living Brass - LB*	£41.00	£49.20
Ⓢ Brushed Nickel - NB / Brushed Brass - BB*	£59.00	£70.80
Ⓢ Living Copper - LC* / Polished Gold - MG	£72.00	£86.40
Ⓢ Aged Brass - AB*	£80.00	£96.00
Ⓢ Brushed Gold -GB / Dark Bronze - DB*	£88.00	£105.60

TOWEL HOOKS

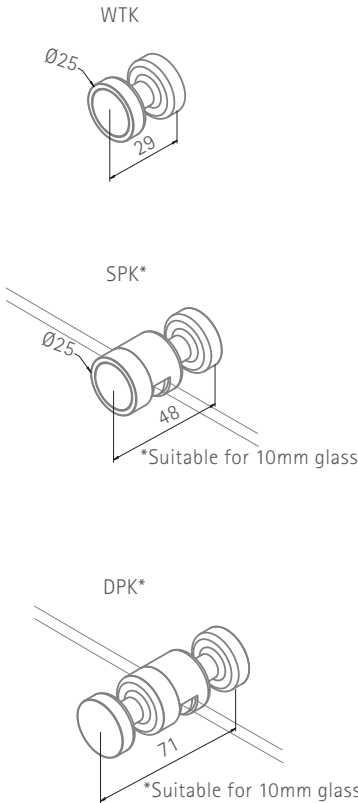
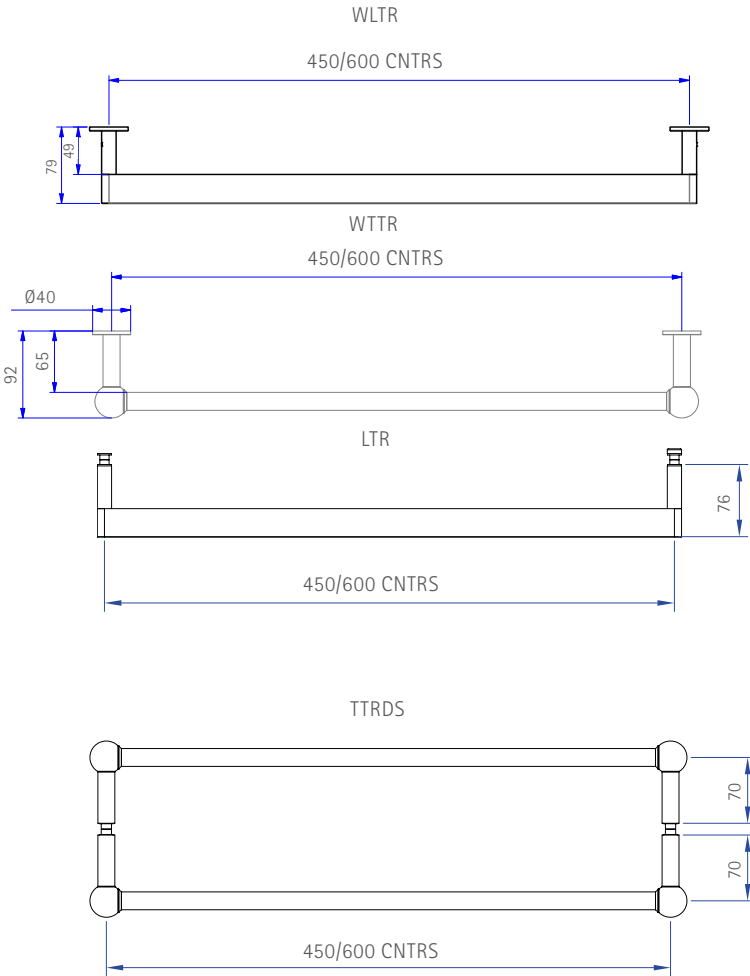
		£ EX. VAT	£ INC. VAT
WTK	Wall Hook	£52.00	£62.40
SPK	Single Panel Hook	£70.00	£84.00
DPK	Double Panel Hook	£76.00	£91.20

Suitable for 10mm thick glass only

FINISH SURCHARGES - TOWEL HOOKS

	WTK		SPK		DPK	
	£ EX. VAT	£ INC. VAT	£ EX. VAT	£ INC. VAT	£ EX. VAT	£ INC. VAT
Ⓢ Polished Chrome - CP (Standard)	£52.00	£62.40	£70.00	£84.00	£76.00	£91.20
Ⓢ Polished Nickel - NP / Living Brass - LB*	£57.00	£68.40	£77.00	£92.40	£84.00	£100.80
Ⓢ Brushed Nickel - NB / Brushed Brass - BB* / Living Copper - LC*	£60.00	£72.00	£81.00	£97.20	£87.00	£104.40
Ⓢ Polished Gold - MG	£68.00	£81.60	£91.00	£109.20	£99.00	£118.80
Ⓢ Brushed Gold - GB / Aged Brass - AB* / Dark Bronze - DB*	£70.00	£84.00	£95.00	£114.00	£103.00	£123.60

\* Living Finishes please see page 43.

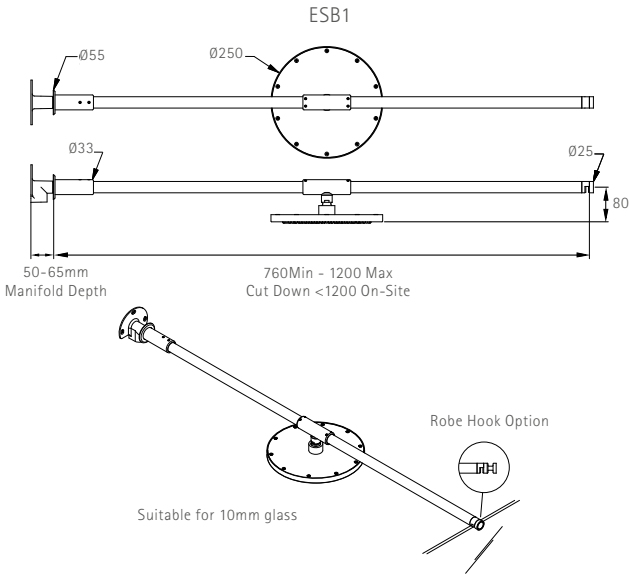


SHOWER BRACE

- Select Shower Brace Model then add Finish surcharge
- Designed for 10mm thick glass only
- Please note the Shower Brace includes one first fix item

EAUZONE SHOWER BRACE WITH GLASS CLAMP

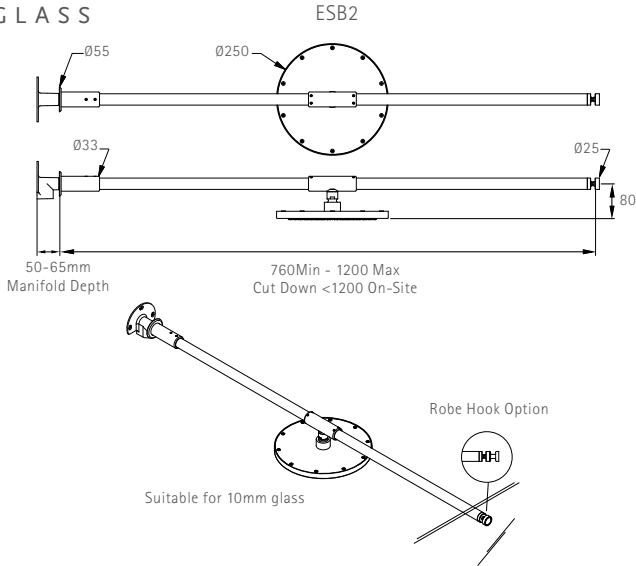
		£ EX. VAT	£ INC. VAT
ESB1	Without Deluge	£621.00	£745.20
ESB1/HK	Without Deluge with Robe Hook	£656.00	£787.20
ESB1/DL	With Deluge	£798.00	£957.60
ESB1/DLHK	With Deluge and Robe Hook	£833.00	£999.60



EAUZONE SHOWER BRACE FOR HOLE IN THE GLASS

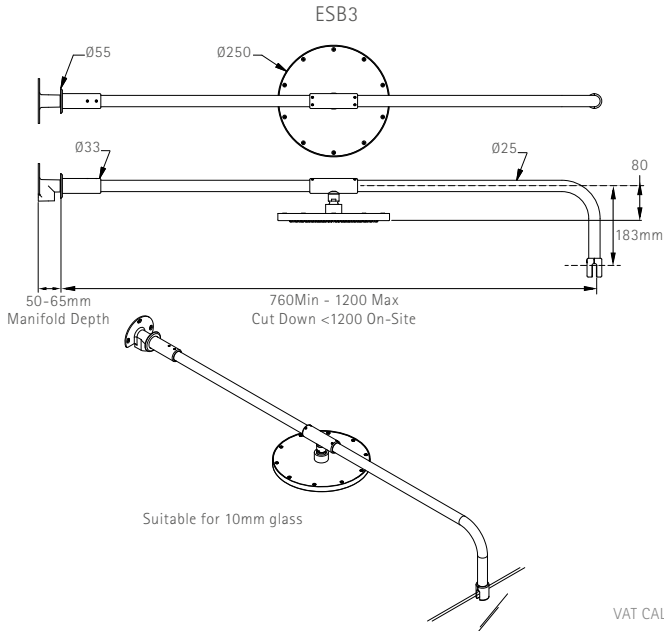
Requires bespoke glass

		£ EX. VAT	£ INC. VAT
ESB2	Without Deluge	£609.00	£730.80
ESB2/HK	Without Deluge with Robe Hook	£644.00	£772.80
ESB2/DL	With Deluge	£786.00	£943.20
ESB2/DLHK	With Deluge and Robe Hook	£821.00	£985.20



EAUZONE HIGH SHOWER BRACE

		£ EX. VAT	£ INC. VAT
ESB3	Without Deluge	£683.00	£819.60
ESB3/DL	With Deluge	£860.00	£1,032.00



FINISHES

	£ EX. VAT	£ INC. VAT
Polished Chrome - CP	-	-
Living Brass - LB* / Polished Nickel - NP	£86.00	£103.20
Brushed Brass - BB* / Living Copper - LC* / Brushed Nickel - NB	£129.00	£154.80
Polished Gold - MG	£258.00	£309.60
Brushed Gold - GB / Dark Bronze - DB* / Aged Brass - AB*	£301.00	£361.20

\* Living finishes please see page 43.  
Matching shower controls, taps and accessories please see [www.swadlingbrassware.co.uk](http://www.swadlingbrassware.co.uk)









## SHOWER TRAYS AND FLOORS BY MATKI

Complete luxury in the Shower demands a stunning foundation.

Matki have manufactured Shower Trays in Cornwall since 1979.

Beginning life within a small boat building factory in Penryn, we now operate a 60000 sq. ft purpose-built factory in Redruth.

All our Shower Trays and Floors are hand built and hand finished with precise attention given to the surface finish; robust coatings are then applied using state of the art machinery ensuring perfect durability.

Each important phase of manufacture is carried out by experienced team members, some of whom have worked with Matki since the very early days. With this experience comes an expert knowledge of our products and our quality demands - each Shower Tray that leaves the Redruth factory is inspected with expert eyes.

Matki offer a wide choice of shapes, sizes, styles and colours of Shower Tray including bespoke, designed to work harmoniously with Matki Shower Enclosures.

### PEACE OF MIND

All Matki Shower Trays and Floors use surface materials which are chosen for their longevity, durability and natural non-slip qualities.

Matt White Continental, Preference and Slate are all Certified Anti Slip Rated using the DIN51097 standard framework.



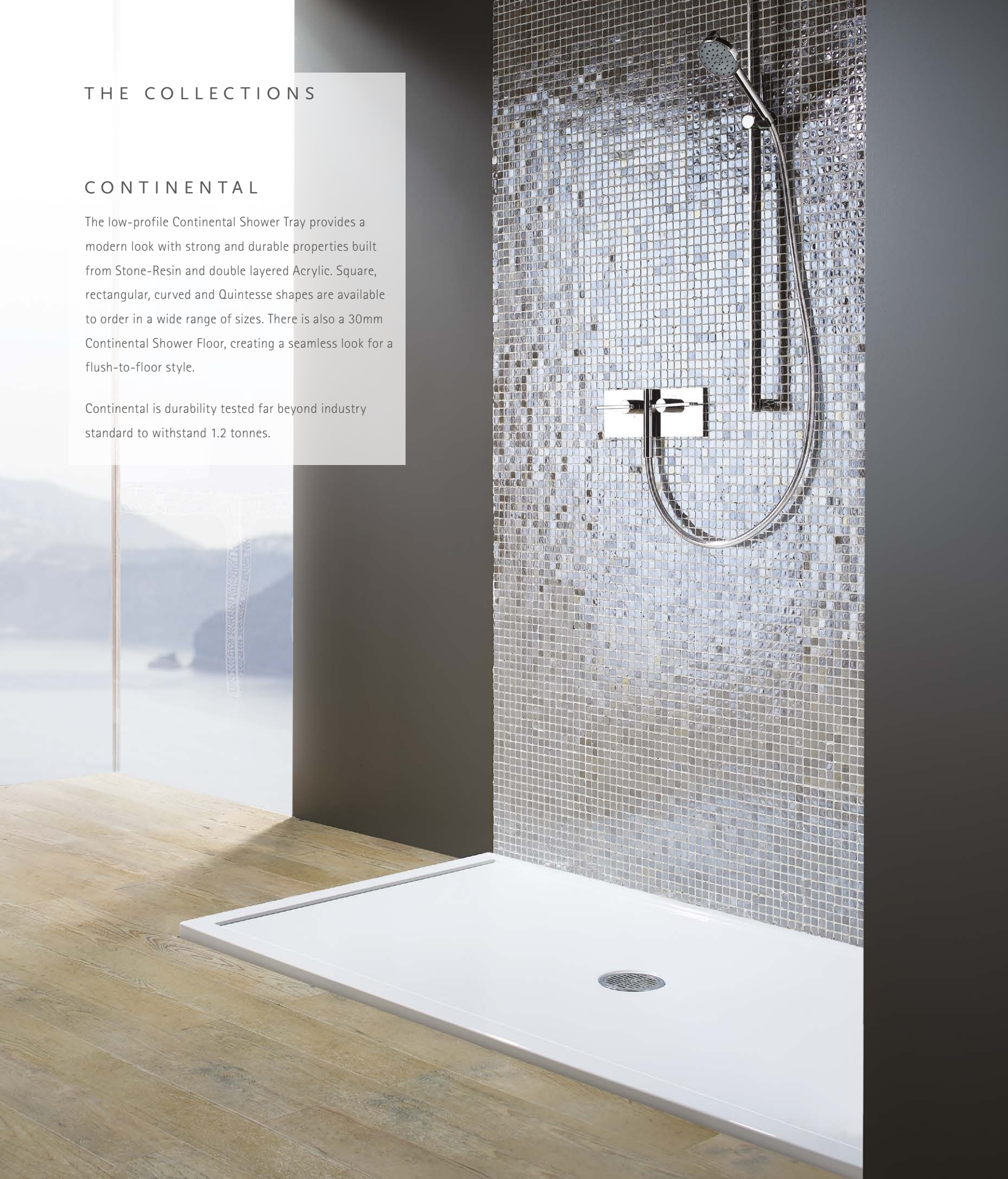


## THE COLLECTIONS

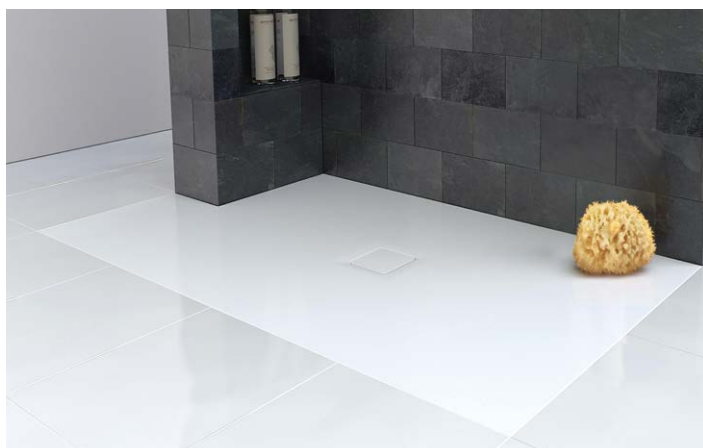
### CONTINENTAL

The low-profile Continental Shower Tray provides a modern look with strong and durable properties built from Stone-Resin and double layered Acrylic. Square, rectangular, curved and Quintesse shapes are available to order in a wide range of sizes. There is also a 30mm Continental Shower Floor, creating a seamless look for a flush-to-floor style.

Continental is durability tested far beyond industry standard to withstand 1.2 tonnes.







## P R E F E R E N C E

Made from the Matki Preference Solid Surface formula rich in ground Marble, Preference Shower Trays and Floors have a luxurious quality each taking up to 6 hours to perfect and hand-polish.

For fitting showering spaces into challenging layouts, bespoke sizes with cut-outs can be produced, catering for internal pipe chases, alcoves and around-bath setups.

Preference Shower Trays and Floors are available in any shape and size up to 2050mm by 1150mm and the central position of the waste can be shifted to avoid joists and other obstructions.



## S L A T E

Modelled on natural slate, the Slate Shower Tray and Floor have an authentic feel harmonising beautifully with natural stone schemes in the bathroom - it is even possible to colour match to surrounding tiling.

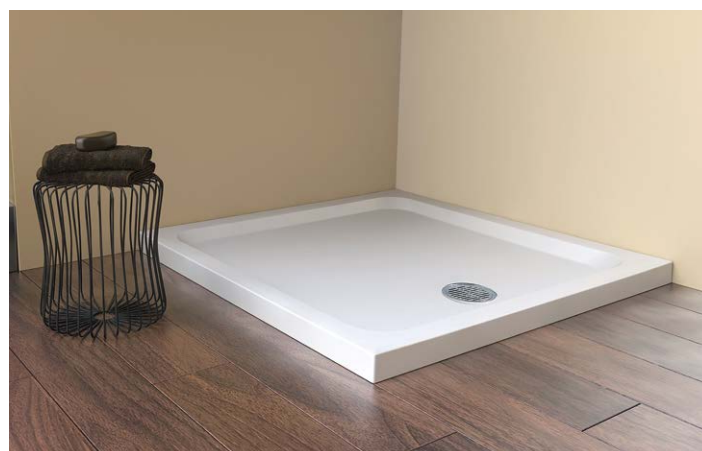
Slate Shower Floors can be made to measure in square or rectangular shapes in any size up to 2000mm x 1000mm with a central waste which can be offset dependent on size ordered.



## U N I V E R S A L

Available in any colour to order, our team can use RAL/Pantone charts, tile samples or even paint names to match colours to the wider bathroom design scheme.

Square, rectangle, curved and Quintesse shapes are available to order - the Universal Linear adds a note of difference to the collection with a uniquely designed linear waste cover.



## F I N E L I N E

Striking a fineline between aesthetic and practicality. With a slightly increased height of 60mm, the Fineline brings added peace of mind and a deeper showering area.

Manufactured from high quality Stone Resin with a double layer acrylic cap.



86. SQUARE & RECTANGULAR SHOWER TRAYS



CONTINENTAL 40

- Low Profile 40mm, 10mm Raised Threshold
- Stone resin, double acrylic cap
- Centre high-flow shower waste, see page 87 for colour options
- Raised Tray version optional with adjustable legs and front panel in white only. Adds 100mm to height. Recess add £78, Corner add £122 ex VAT
- Available in White (Standard); For Matt White, Super Matt White, Matt Graphite and Pergamon add £80 ex VAT
- Matt White and Matt Graphite are certified DIN51097 A Anti Slip; Super Matt White C Anti Slip

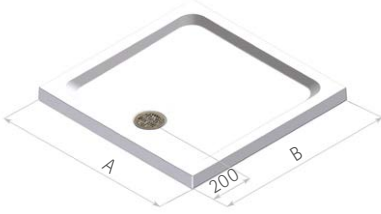


A	B	CL	PRICE (EX. VAT)	PRICE (INC. VAT)
800	800	CL800	£277.00	£332.40
900	760	CL9076	£304.00	£364.80
900	800	CL9080	£309.00	£370.80
900	900	CL900	£326.00	£391.20
1000	800	CL1080	£337.00	£404.40
1000	900	CL1090	£344.00	£412.80
1000	1000	CL1000	£420.00	£504.00
1100	800	CL1180	£355.00	£426.00
1100	900	CL1190	£363.00	£435.60
1200	700	CL1270	£352.00	£422.40
1200	760	CL1276	£354.00	£424.80
1200	800	CL1280	£356.00	£427.20
1200	900	CL1290	£411.00	£493.20
1200	1000	CL1210*	£449.00	£538.80
1300	800	CL1380	£423.00	£507.60
1300	900	CL1390	£437.00	£524.40
1400	800	CL1480	£447.00	£536.40
1400	900	CL1490	£472.00	£566.40
1500	800	CL1580	£501.00	£601.20
1500	900	CL1590	£505.00	£606.00
1600	800	CL1680	£518.00	£621.60
1600	900	CL1690	£526.00	£631.20
1700	800	CL1780	£536.00	£643.20
1700	900	CL1790	£567.00	£680.40
1800	900	CL1890*	£600.00	£720.00

\*Not available in Matt White, Super Matt White, Matt Graphite or Pergamon

FINELINE

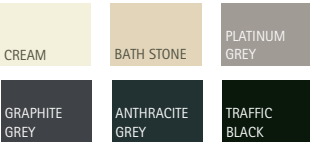
- Medium Profile 60mm, 35mm Raised Threshold
- Stone resin, double acrylic cap
- Supplied with adjustable legs
- Centre high-flow shower waste, see page 87 for colour options
- Available in White only
- Optional front panel in white only. Recess add £78, Corner add £122 ex VAT



A	B	SN	PRICE (EX. VAT)	PRICE (INC. VAT)
697	697	SN700	£276.00	£331.20
754	754	SN760	£289.00	£346.80
797	797	SN800**	£306.00	£367.20
895	758	SN9076	£322.00	£386.40
895	795	SN9080	£331.00	£397.20
896	896	SN900**	£353.00	£423.60
998	998	SN1000	£418.00	£501.60
1050	796	SN1050	£370.00	£444.00
1200	700	SN1270	£362.00	£434.40
1194	758	SN1276	£394.00	£472.80
1200	797	SN1280**	£407.00	£488.40
1196	898	SN1290	£444.00	£532.80
1505	805	SN1580**	£525.00	£630.00
1500	900	SN1590	£540.00	£648.00
1700	700	SN1770	£519.00	£622.80
1700	800	SN1780	£563.00	£675.60
1700	900	SN1790	£597.00	£716.40
1800	800	SN1880	£608.00	£729.60

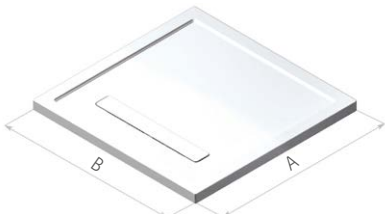
\*\*Available with 10mm tiling upstands, please see [www.matki.co.uk](http://www.matki.co.uk) for further details

POPULAR COLOUR OPTIONS FOR UNIVERSAL 40,  
UNIVERSAL LINEAR AND SLATE SHOWER TRAYS



CONTINENTAL LINEAR

- Low Profile 40mm, 10mm Raised Threshold
- Stone resin, double acrylic cap
- Linear waste cover in White (standard) or choice of finishes, see page 87 for pricing
- Raised Tray option with adjustable legs and panel to match tray. Adds 100mm to height. Recess add £78, Corner £122 ex VAT
- Available in White (Standard); For Matt White, Super Matt White, Matt Graphite and Pergamon add £80 ex VAT
- Available without waste drilled, allowing choice of waste position or 2 wastes to drain up to 50L/min with brass slotted cover. Add 'W' to end of code for undrilled, and 'WF' with additional waste (surcharge £102), e.g. CLL900WFPC



A	B	CLL	PRICE (EX. VAT)	PRICE (INC. VAT)
800	800	CLL800	£358.00	£429.60
900	800	CLL9080	£380.00	£456.00
900	900	CLL900	£384.00	£460.80
1000	800	CLL1080	£388.00	£465.60
1000	900	CLL1090	£422.00	£506.40
1000	1000	CLL1000	£467.00	£560.40
1100	800	CLL1180	£412.00	£494.40
1100	900	CLL1190	£441.00	£529.20
1200	800	CLL1280	£428.00	£513.60
1200	900	CLL1290	£455.00	£546.00
1200	1000	CLL1210*	£517.00	£620.40
1300	800	CLL1380	£471.00	£565.20
1300	900	CLL1390	£483.00	£579.60
1400	800	CLL1480	£494.00	£592.80
1400	900	CLL1490	£520.00	£624.00
1500	800	CLL1580	£543.00	£651.60
1500	900	CLL1590	£549.00	£658.80
1600	800	CLL1680	£564.00	£676.80
1600	900	CLL1690	£579.00	£694.80
1700	700	CLL1770	£547.00	£656.40
1700	760	CLL1776	£558.00	£669.60
1700	800	CLL1780	£596.00	£715.20
1700	900	CLL1790	£625.00	£750.00

For waste options please see page 87



UNIVERSAL 40

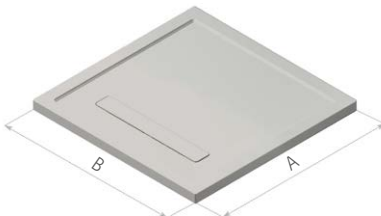
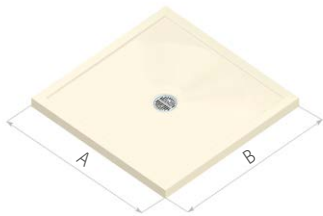
- Low Profile 40mm, 10mm Raised Threshold
- Stone resin, gel coating
- Centre high-flow shower waste, see below for colour options
- UL900, UL1280, UL1290 and UL1680 available in semi matt finish
- Raised Tray version optional with adjustable legs and front panel in colour to match tray. Adds 100mm to height. Recess add £78, Corner add £122 ex VAT
- Available in any colour via RAL or sample matching

UNIVERSAL LINEAR

- Low Profile 40mm, 10mm Raised Threshold
- Stone resin, gel coating
- Linear waste cover in colour to match tray (standard) or choice of S finishes, see below for pricing
- Raised Tray option with adjustable legs and panel to match tray. Adds 100mm to height. Recess add £78, Corner £122 ex VAT
- Available in any colour via RAL or sample matching
- Available without waste drilled, allowing choice of waste position or 2 wastes to drain up to 50L/min with brass slotted cover. Add 'W' to end of code for undrilled, and 'WF' with additional waste (surcharge £102), e.g. ULL900WFPC

SLATE

- Low Profile 40mm, 10mm+ Raised Threshold
- Stone resin, gel coating
- Centre side shower waste with cover in matching colour
- Raised Tray version optional with adjustable legs and front panel in colour to match tray. Adds 100mm to height. Recess add £78, Corner add £122 ex VAT
- Available in any colour via RAL or sample matching
- Textured finish modelled on real slate
- Certified DIN51097 A Anti Slip



A	B	UL	PRICE (EX. VAT)	PRICE (INC. VAT)
760	760	UL760	£317.00	£380.40
800	800	UL800	£329.00	£394.80
900	900	UL900	£373.00	£447.60
1200	800	UL1280	£404.00	£484.80
1200	900	UL1290	£456.00	£547.20
1400	900	UL1490	£531.00	£637.20
1500	900	UL1590	£563.00	£675.60
1600	800	UL1680	£575.00	£690.00

A	B	ULL	PRICE (EX. VAT)	PRICE (INC. VAT)
900	800	ULL9080	£420.00	£504.00
900	900	ULL900	£424.00	£508.80
1000	800	ULL1080	£429.00	£514.80
1200	800	ULL1280	£475.00	£570.00
1200	900	ULL1290	£502.00	£602.40
1300	900	ULL1390	£531.00	£637.20
1400	800	ULL1480	£543.00	£651.60
1400	900	ULL1490	£570.00	£684.00
1500	900	ULL1590	£599.00	£718.80
1700	900	ULL1790	£683.00	£819.60

A	B	SL	PRICE (EX. VAT)	PRICE (INC. VAT)
905	905	SL900	£447.00	£536.40
1205	805	SL1280	£492.00	£590.40
1205	905	SL1290	£512.00	£614.40
1405	805	SL1480	£570.00	£684.00
1505	805	SL1580	£615.00	£738.00
1502	905	SL1590	£632.00	£758.40
1605	805	SL1680	£642.00	£770.40
1700	905	SL1790	£655.00	£786.00

WASTE COLOURS AND FINISHES

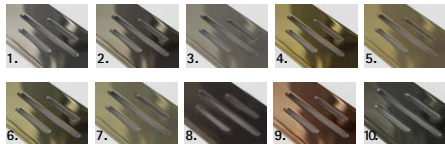
SWADLING BRASSWARE S FINISHES FOR LINEAR WASTE COVERS:

Polished Chrome (CP), Living Brass* (LB)	£169 ex VAT
Polished Nickel (NP), Living Copper* (LC)	£187 ex VAT
Brushed Nickel (NB), Brushed Brass* (BB)	£195 ex VAT
Polished Gold (MG), Aged Brass* (AB)	£220 ex VAT
Brushed Gold (GB), Dark Bronze - DB*	£229 ex VAT

WASTE GRILL OPTIONS FOR CONTINENTAL, UNIVERSAL 40 AND FINELINE:

High-flow shower waste with Chrome flange and Stainless Steel grill as standard, see alternative finishes, right and quote on order adding a supplement of £43 excluding VAT for these finishes.

\*Living finishes are unlacquered and will change over time in unpredictable ways. Please see Maintenance section of Matki website for more details



1. Chrome (CP), 2. Nickel (NP), 3. Brushed Nickel (NB), 4. Gold (MG), 5. Brushed Gold (GB), 6. Living Brass (LB), 7. Brushed Brass (BB), 8. Aged Brass (AB), 9. Living Copper (LC), 10. Dark Bronze (DB)

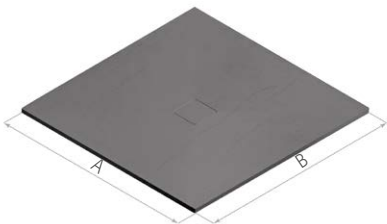


88. SHOWER FLOORS



SLATE FLOOR

- Flush to Floor fitting, 38mm Depth
- Stone resin, gel coating
- Centre shower waste with cover in matching colour
- Available in any colour via RAL or sample matching
- Textured finish modelled on real slate
- Certified DIN51097 A Anti Slip
- Choose from 700, 760, 800, 900, 1000 width dimension at same price, please state width required clearly on order. For alternative lengths, widths and waste locations if possible, add £177 ex VAT
- Slotted Waste Cover for enhanced drainage available at £92 ex VAT

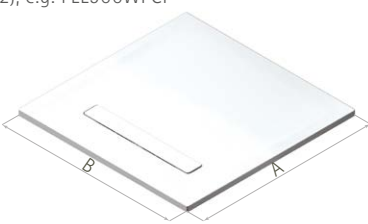


A	B	SLF	PRICE (EX. VAT)	PRICE (INC. VAT)
760	700-760	SLF760	£491.00	£589.20
800	700-800	SLF800	£491.00	£589.20
900	700-900	SLF900	£491.00	£589.20
1000	700-1000	SLF1000	£514.00	£616.80
1100	700-1000	SLF1100	£546.00	£655.20
1200	700-1000	SLF1200	£546.00	£655.20
1300	700-1000	SLF1300	£626.00	£751.20
1400	700-1000	SLF1400	£626.00	£751.20
1500	700-1000	SLF1500	£626.00	£751.20
1600	700-1000	SLF1600	£704.00	£844.80
1700	700-1000	SLF1700	£704.00	£844.80
1800	700-1000	SLF1800	£704.00	£844.80
1900	800-1000	SLF1900	£911.00	£1,093.20
2000	800-1000	SLF2000	£911.00	£1,093.20



CONTINENTAL LINEAR FLOOR

- Standard or Flush to Floor fitting, 30mm Depth
- Stone Resin, double acrylic cap
- Linear waste cover in White (standard) or choice of S finishes, see page 87
- Available in White (Standard); For Matt White, Super Matt White, Matt Graphite and Pergamon add £80 ex VAT
- Matt White and Matt Graphite are certified DIN51097 A Anti Slip; Super Matt White C Anti Slip
- Available without waste drilled, allowing choice of waste position or 2 wastes to drain up to 50L/min with brass slotted cover. Add 'W' to end of code for undrilled, and 'WF' with additional waste (surcharge £102), e.g. FLL900WFCP



A	B	FLL	PRICE (EX. VAT)	PRICE (INC. VAT)
900	800	FLL9080	£369.00	£442.80
900	900	FLL900	£381.00	£457.20
1000	800	FLL1080	£382.00	£458.40
1000	900	FLL1090	£395.00	£474.00
1000	1000	FLL1000	£404.00	£484.80
1100	800	FLL1180	£398.00	£477.60
1100	900	FLL1190	£426.00	£511.20
1200	800	FLL1280	£417.00	£500.40
1200	900	FLL1290	£439.00	£526.80
1300	800	FLL1380	£450.00	£540.00
1300	900	FLL1390	£461.00	£553.20
1400	800	FLL1480	£465.00	£558.00
1400	900	FLL1490	£502.00	£602.40
1500	800	FLL1580	£521.00	£625.20
1500	900	FLL1590	£527.00	£632.40
1600	800	FLL1680	£541.00	£649.20
1600	900	FLL1690	£555.00	£666.00
1700	800	FLL1780	£584.00	£700.80
1700	900	FLL1790	£598.00	£717.60



CONTINENTAL 30

- Standard or Flush to Floor fitting, 30mm Depth
- Stone resin, double acrylic cap
- Centre high-flow shower waste, see page 87 for colour options
- Available in White (Standard); For Matt White, Super Matt White, Matt Graphite and Pergamon add £80 ex VAT
- Matt White and Matt Graphite are certified DIN51097 A Anti Slip; Super Matt White C Anti Slip
- Tiling flange now removed



A	B	FL	PRICE (EX. VAT)	PRICE (INC. VAT)
800	800	FL800	£328.00	£393.60
900	800	FL9080	£342.00	£410.40
900	900	FL900	£363.00	£435.60
1200	800	FL1280	£389.00	£466.80
1200	900	FL1290	£403.00	£483.60
1500	900	FL1590	£507.00	£608.40
1700	900	FL1790	£539.00	£646.80



Continental Linear Trays and Floors can be ordered undrilled with three possible waste positions

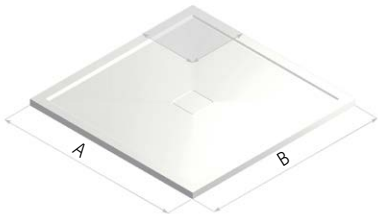
Matki Shower Floors are designed for a flush, flat to floor appearance. If the showering area is not fully enclosed water may escape the edges of the Matki Shower floor. This should be considered during design and installation in a fully tanked and prepared wet room area.





PREFERENCE TRAY

- Low Profile 30mm-35mm, 10mm Raised Threshold
- Centre shower waste with cover in Preference material

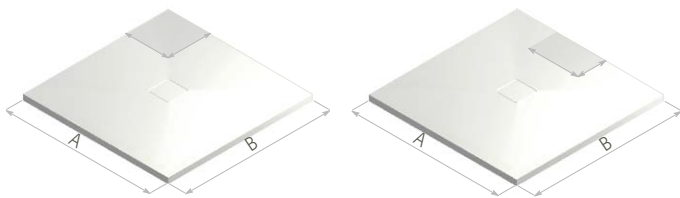


A	B	MP	PRICE (EX. VAT)	PRICE (INC. VAT)
800	800	MP800	£521.00	£625.20
900	900	MP900	£572.00	£686.40
1000	1000	MP1000	£651.00	£781.20
1200	900	MP1290	£665.00	£798.00
1500	900	MP1590	£796.00	£955.20
*900	900	MP900 MTM	£854.00	£1,024.80
*1000	1050	MP1000 MTM	£977.00	£1,172.40
*1350	1050	MP1315 MTM	£1,152.00	£1,382.40
*1350	1350	MP1350 MTM	£1,391.00	£1,669.20
*1800	1150	MP1800 MTM	£1,548.00	£1,857.60
*2050	1150	MP2000 MTM	£1,593.00	£1,911.60

\*Made to Measure up to size.

PREFERENCE FLOOR

- Flush to floor fitting, 20mm-25mm Depth
- Centre shower waste with cover in Preference material



A	B	MF	PRICE (EX. VAT)	PRICE (INC. VAT)
760	700 - 760	MF760 MTM	£614.00	£736.80
800	700 - 800	MF800 MTM	£614.00	£736.80
900	700 - 900	MF900 MTM	£614.00	£736.80
1000	700 - 1000	MF1000 MTM	£722.00	£866.40
1100	700 - 1100	MF1100 MTM	£900.00	£1,080.00
1200	700 - 1200	MF1200 MTM	£900.00	£1,080.00
1300	700 - 1300	MF1300 MTM	£1,052.00	£1,262.40
1400	700 - 1100	MF1400 MTM	£1,052.00	£1,262.40
1500	700 - 1100	MF1500 MTM	£1,104.00	£1,324.80
1600	700 - 1100	MF1600 MTM	£1,104.00	£1,324.80
1700	700 - 1100	MF1700 MTM	£1,163.00	£1,395.60
1800	700 - 1100	MF1800 MTM	£1,195.00	£1,434.00
1900	800 - 1100	MF1900 MTM	£1,234.00	£1,480.80
2000	800 - 1100	MF2000 MTM	£1,267.00	£1,520.40

PREFERENCE MATERIAL PROPERTIES

- Solid surface, semi matt texture.
- Made from ground marble.
- Available in White only.

PREFERENCE SAFETY AND DURABILITY

- Certified DIN51097 B Anti Slip and PTV 36+ Low Slip Potential.
- Easy to clean, durable and fully restorable surface.

PREFERENCE BESPOKE

- MP any size up to 2050 x 1150mm; MF 2000 x 1100mm.
- Shapes: Square, Rectangular, Angled Sides, Quintesse, Curved, Cut-outs.
- Waste position can be moved centrally to avoid joists.



Slotted Waste Cover for enhanced drainage available at £92 ex VAT.

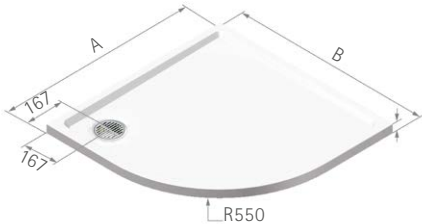
For more information on Made to Measure Shower Trays please contact the Matki Bespoke Team [bespoke.department@matki.co.uk](mailto:bespoke.department@matki.co.uk) 01454 322888.

90. CURVED SHOWER TRAYS



CONTINENTAL 40 CURVED

- 40mm Height, 10mm Raised Threshold
- Stone resin, double acrylic cap
- Centre high-flow shower waste, see page 87 for colour options
- Raised Tray version optional with adjustable legs and front panel in White only. Adds 100mm to height. Add £122 ex VAT
- Available in White (Standard); For Matt White, Super Matt White, Matt Graphite and Pergamon add £80 ex VAT
- Matt White and Matt Graphite are certified DIN51097 A Anti Slip; Super Matt White C Anti Slip



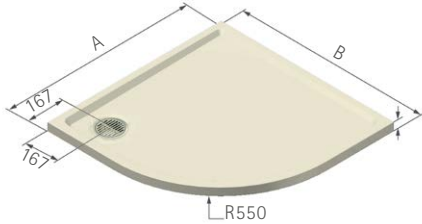
A	B	CLC	PRICE (EX. VAT)	PRICE (INC. VAT)
800	800	CLC800	£392.00	£470.40
900	900	CLC900	£444.00	£532.80
800	1000	CLC1080LH**	£439.00	£526.80
1000	800	CLC1080RH	£439.00	£526.80
900	1000	CLC1090LH**	£465.00	£558.00
1000	900	CLC1090RH	£465.00	£558.00
800	1200	CLC1280LH**	£485.00	£582.00
1200	800	CLC1280RH	£485.00	£582.00
900	1200	CLC1290LH**	£501.00	£601.20
1200	900	CLC1290RH	£501.00	£601.20
900	1500	CLC1590LH**	£526.00	£631.20
1500	900	CLC1590RH	£526.00	£631.20

\*\* Waste is located in RH corner for this model, other models have waste outlet in LH corner, see illustrations. For waste options please see page 87.



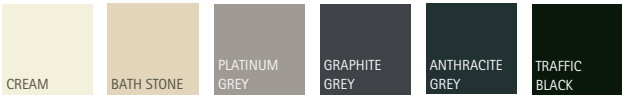
UNIVERSAL 40 CURVED

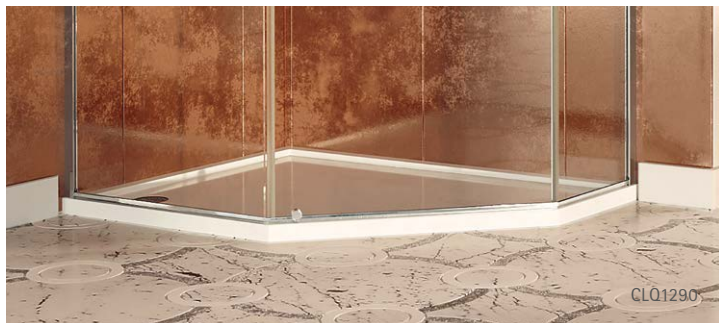
- 40mm Height, 10mm Raised Threshold
- Stone resin, gel coating
- Centre high-flow shower waste, see page 87 for colour options
- Raised Tray version optional with adjustable legs and front panel in colour to match tray. Adds 100mm to height. Add £122 ex VAT
- Available in any colour via RAL or sample matching



A	B	ULC	PRICE (EX. VAT)	PRICE (INC. VAT)
900	900	ULC900	£444.00	£532.80
900	1200	ULC1290LH**	£501.00	£601.20
1200	900	ULC1290RH	£501.00	£601.20
900	1500	ULC1590LH**	£526.00	£631.20
1500	900	ULC1590RH	£526.00	£631.20

POPULAR COLOUR OPTIONS FOR UNIVERSAL 40 CURVED AND UNIVERSAL 40 QUINTESS shower trays



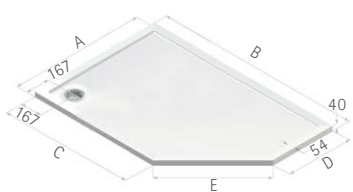


CONTINENTAL 40 QUINTESSE

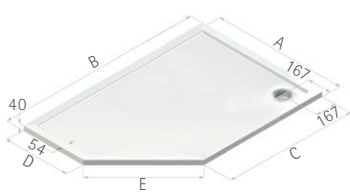
- 40mm Height, 10mm Raised Threshold
- Stone resin, double acrylic cap
- Centre high-flow shower waste, see page 87 for colour options
- Raised Tray version optional with adjustable legs and front panel in White only. Adds 100mm to height. Add £122 ex VAT
- Available in White (Standard); For Matt White, Super Matt White, Matt Graphite and Pergamon add £80 ex VAT
- Matt White and Matt Graphite are certified DIN51097 A Anti Slip; Super Matt White C Anti Slip



A	B	C	D	E	CLQ	PRICE (EX. VAT)	PRICE (INC. VAT)
900	900	398	398	710	CLQ900	£405.00	£486.00
1000	1000	498	498	710	CLQ1000	£448.00	£537.60



Note: Model above shows LH offset tray.



Note: Model above shows RH offset tray.

A	B	C	D	E	CLQ	PRICE (EX. VAT)	PRICE (INC. VAT)
800	900	498	398	568	CLQ9080LH*	£387.00	£464.40
800	900	498	398	568	CLQ9080RH*	£387.00	£464.40
800	1000	598	398	568	CLQ1080LH*	£414.00	£496.80
800	1000	598	398	568	CLQ1080RH*	£414.00	£496.80
900	1000	498	398	710	CLQ1090LH*	£427.00	£512.40
900	1000	498	398	710	CLQ1090RH*	£427.00	£512.40
800	1200	798	398	568	CLQ1280LH*	£445.00	£534.00
800	1200	798	398	568	CLQ1280RH*	£445.00	£534.00
900	1200	698	398	710	CLQ1290LH	£452.00	£542.40
900	1200	698	398	710	CLQ1290RH	£452.00	£542.40
900	1500	998	398	710	CLQ1590LH	£493.00	£591.60
900	1500	998	398	710	CLQ1590RH	£493.00	£591.60

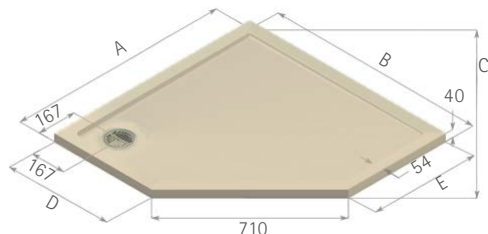
\*Size available from July 2025

See page 64 to check Offset Configuration Drawings



UNIVERSAL 40 QUINTESSE

- 40mm Height, 10mm Raised Threshold
- Stone resin, gel coating
- Centre high-flow shower waste, see page 87 for colour options
- Raised Tray version optional with adjustable legs and front panel in colour to match tray. Adds 100mm to height. Add £122 ex VAT
- Available in any colour via RAL or sample matching



A	B	C	D	E	ULQ	PRICE (EX. VAT)	PRICE (INC. VAT)
900	900	918	398	398	ULQ900	£405.00	£486.00
1000	1000	1058	498	498	ULQ1000	£448.00	£537.60
900	1200	1129	698	398	ULQ1290LH	£452.00	£542.40
1200	900	1129	398	698	ULQ1290RH**	£452.00	£542.40
900	1500	1341	998	398	ULQ1590LH	£493.00	£591.60
1500	900	1341	398	998	ULQ1590RH**	£493.00	£591.60

\*\* Waste is located in RH corner for this model, other models have waste outlet in LH corner, see illustrations. For waste options please see page 87.



# MATKI SHOWERING

## GENERAL INFORMATION

EauZone is a luxury collection of Shower Enclosures, Wet Room Panels and Bath Screens in 10mm Safety Glass. It is available in a wide range of standard sizes and in custom, bespoke sizes. Due to the number of options available, it is strongly recommended that you visit a Matki Centre to view a display of the product you are interested in. You can find your nearest Matki Centre by visiting the Where To Buy section on our website and inputting your postcode.

The Matki website also includes an online EauZone Configuration Tool and a Bespoke Section to help you view the whole range of possibilities on offer. If you have any questions please do not hesitate to call us on our Customer Helpline.

All images, finishes and colours featured in this brochure are for representation purposes only. Finishes and colours may vary across materials.

### MATKI 10 YEAR GUARANTEE

Matki shower surrounds and shower trays are covered by a 10-year guarantee against parts failure, with the initial two-year period also having labour cost cover. Gold and Nickel-plated parts and all other special finishes and Matki Easy Clean Protection are guaranteed for the initial two-year period only. Living Brass, Brushed Brass, Aged Brass, Dark Bronze and Living Copper finishes are not covered by the Guarantee. Matki Elixir and Matki Swadling thermostatic shower mixers and accessories and Matki Fastflow shower wastes are guaranteed for five years. The 10-year Matki guarantee is subject to registration and the issuing of a Guarantee number. It is subject to the terms and conditions stated on the Matki website.

### MATKI EASY CLEAN PROTECTION

Matki Easy Clean Protection is an invisible glass surface coating which helps to reduce limescale and hard water deposits to make cleaning of the glass so much easier.

### WATER SOFTENERS AND EASY CLEAN PROTECTION

Certain types of water softeners increase the alkalinity of the water due to a carry-over of Chloride during re-generation which can cause aggressive water spots on both untreated and Easy Clean protected glass. If using a water softener we recommend a two-cylinder machine with automatic re-generation instead of a timer.

If a single-cylinder water softener with timer is already installed it is recommended that after each shower excess water is removed from the glass with a squeegee or with a micro-fibre cloth.

### PRICES

Matki policy is one of continual improvement and we reserve the right to change specification, colour and prices without notice.

Matki PLC, Churchward Road, Yate, Bristol BS37 5PL

Tel: 01454 322 888 Email: [helpline@matki.co.uk](mailto:helpline@matki.co.uk)

[www.matki.co.uk](http://www.matki.co.uk)

Matki Shower Doors, Surrounds, and Trays are produced in accordance with BS EN ISO 9001:2000 Quality Assurance Systems.

Preference, Slate and Continental Matt White are Certified Anti Slip by DIN51097 and PTV standards. See individual product pages.

Matki, Swadling, EauZone, EauZone Plus, ONE, Eleganza, Classica, Colonade, Elixir, Fineline, Illusion, Inswing, Mirage, Quintesse, Radiance, Eclipse and Preference are Registered Trade Marks.

All other Trade Marks featured, applied for. All rights reserved.

Design Rights Reserved: Radius-20 Wet Room Panel.

Colonade UK Patent No. GB2289 302.B Design Right and Copyright.

Matki Plc. All rights reserved.

Classica UK Patent No. GB2351299B. Protected by US Patent No. 11,414,922.

Elixir shower mixer patent applied for.

EauZone Hinge patent no. UK: 2470778.

As part of the continuing policy of product improvement and design, we reserve the right to amend specification, colours and prices without prior notice.

Thank you to Domus Group [www.domusgroup.com](http://www.domusgroup.com) for the wonderful tiles featured on the front cover and pages 2 to 5, and to The Sodbury Florist [www.sodburyflorist.co.uk](http://www.sodburyflorist.co.uk) for the beautiful plants and flowers. Thank you to Ashton and Bentley for the Basin shown on page 22. Image featured on page 47 is a bespoke display at The Bathroom Company in Edinburgh.

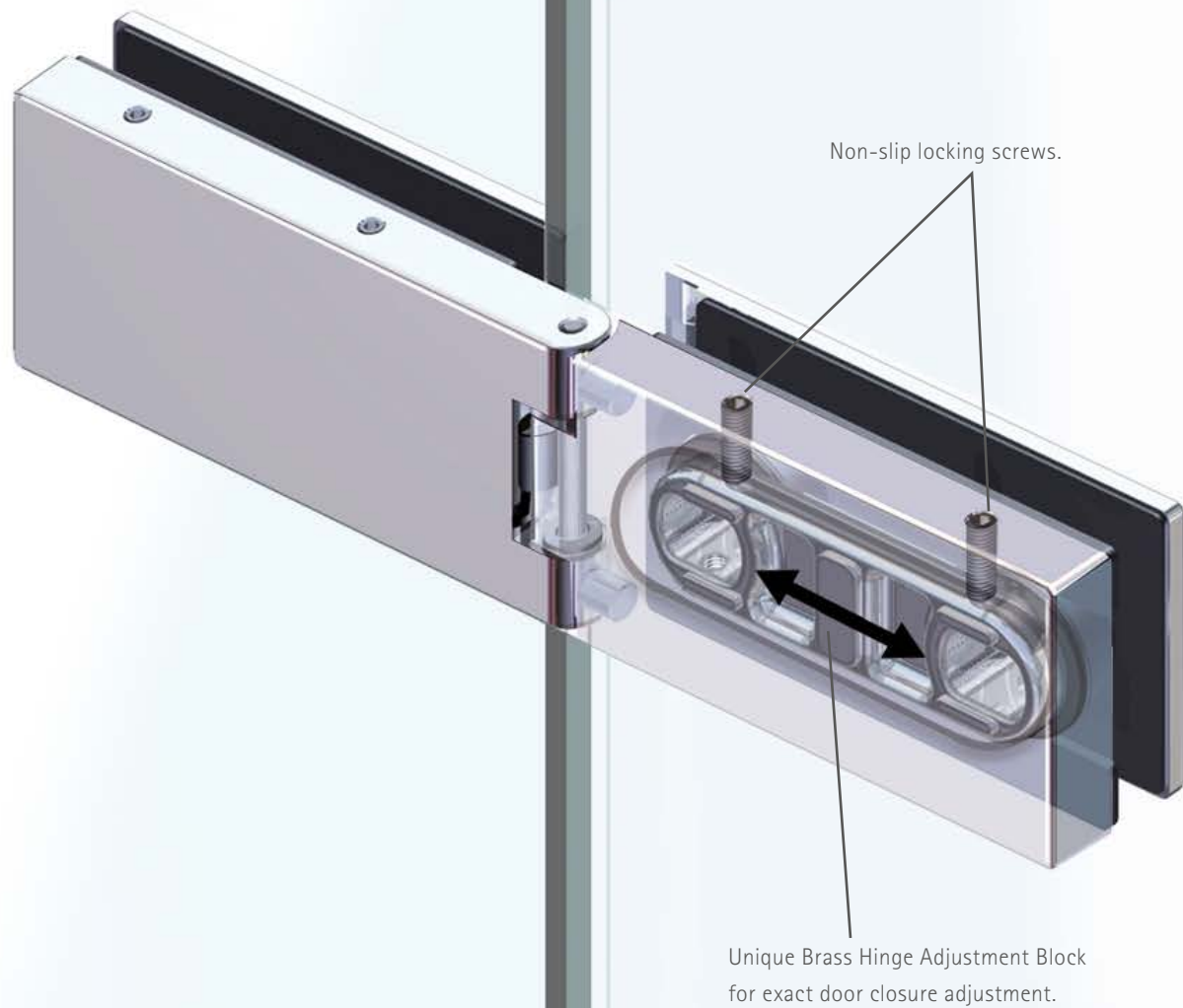
Matki continuously develop new products, sizes, ideas and innovations and we recommend that you visit our website [www.matki.co.uk/matki-news](http://www.matki.co.uk/matki-news) for the latest updates.



BSI certificate number: FM 14200

## NON-SLIP HINGE DETAILS\*

All Eauzone Shower Doors and Bath Screens are fitted with Matki's unique non-slip hinge assemblies\*, retaining perfect adjustment of the door glass in use.



# matki

Matki PLC, Churchward Road, Yate, Bristol BS37 5PL

Tel: 01454 322 888 Email: [helpline@matki.co.uk](mailto:helpline@matki.co.uk)

[www.matki.co.uk](http://www.matki.co.uk)

All Matki products are designed  
and produced in the UK

